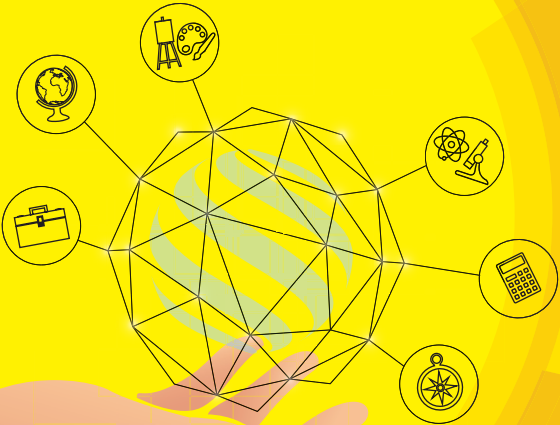


WHAT'S NEXT



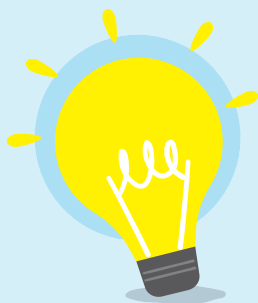
TAKING MY NEXT STEP
FORWARD AFTER MY

PSLE

So, What's Next after PSLE? Use this brochure to help you in your decision-making! Start your journey by:

1. **Discovering Purpose – Who am I?**
2. **Exploring Opportunities – Where do I want to go?**
3. **Staying Relevant – How do I get there?**

As you consider these questions, you will have a deeper understanding of your values, interests, personality and skills. This will enable you to make an informed decision on your journey after PSLE.



1

DISCOVERING PURPOSE – WHO AM I?

The more I know about myself, the better my decisions on how I can meaningfully play a part in my community.

To find out more about myself, I can think about these questions:

- What are some of the things I enjoy doing?
- How would I describe my values, interests, personality and skills?
- What are my goals and aspirations?
- How do I want to contribute to my home and school through my goals and aspirations?



To find out more about skills, work values and job roles, and learn more about yourself, please visit:

<https://go.gov.sg/careerquest-pri>



2

EXPLORING OPPORTUNITIES - WHERE DO I WANT TO GO?

There are many education pathways which I can confidently explore.

To explore my secondary school choices, I can think about these questions:

- What are the learning programmes, subjects and Co-Curricular Activities (CCAs) offered that I can take up?
 - In addition to enrichment programmes and CCAs, there are Applied Learning Programmes (ALPs), Learning for Life Programmes (LLPs) and other school-initiated distinctive programmes which offer opportunities for you to acquire life-skills in authentic contexts.
- How will these programmes and learning opportunities help develop my values, interests, personality and skills?
- What is the school culture and environment like?
- Where is the school located and how will I get there?
- Does the school provide specialised facilities or resources if required for my learning needs?

Choosing a secondary school depends on your strengths, interests and abilities. Learn about the considerations when choosing a school and how the posting process works to make an informed decision.



To find out more, please visit:
<https://go.gov.sg/sec1posting>

To find out more about the programmes and CCAs offered in secondary schools, please visit:



Programmes
<https://go.gov.sg/secprogrammes>



CCA
<https://go.gov.sg/ccaprogrammes>



Strategic Partnership CCA
<https://go.gov.sg/sp-cca>



Types of Secondary Schools

There are 5 types of secondary schools.

- Government schools, including autonomous schools
- Government-aided schools, including autonomous schools
- Independent schools
- Specialised independent schools
- Specialised schools



To find out more about the types of secondary schools, please visit:

<https://go.gov.sg/typesofschools>



Express Course

The Express course has two programmes: GCE O-Level and Integrated Programme. The GCE O-Level Programme is a 4-year course leading to the GCE O-Level examination. The Integrated Programme is a 6-year course leading to the GCE A-Level examination or International Baccalaureate Diploma or NUS High School Diploma. Students in the Integrated Programme do not need to take the GCE O-Level examination in Secondary 4.



To find out more about the Express Course, please visit:

<https://go.gov.sg/secondary-exp>



Normal Course

Students in the Normal course follow either the Normal (Academic) [N(A)] or Normal (Technical) [N(T)] curriculum. The Normal course is a 4-year programme leading to the GCE N-Level examination. Eligible N(A) students will be offered a 5th year leading to the GCE O-Level examination.

Students in the Normal course may also consider taking up specific subjects at a higher academic level (e.g. N(A) students may be eligible to take subjects at the Express level), as early as the start of Secondary 1.

To find out more about the Normal Course, please visit:



Normal (Academic) Course

[https://go.gov.sg/
secondary-na](https://go.gov.sg/secondary-na)



Normal (Technical) Course

[https://go.gov.sg/
secondary-nt](https://go.gov.sg/secondary-nt)

Full Subject-Based Banding

Full Subject-Based Banding (Full SBB) is part of the Ministry of Education's ongoing efforts to nurture the joy of learning and develop multiple pathways to cater to the different strengths and interests of our students. There will no longer be separate Express, N(A), and N(T) courses under Full SBB. Students will learn each subject at the level that best caters to their overall strengths, interests and learning needs.

Currently, under Subject-Based Banding (Secondary), eligible students in the Normal course can offer PSLE subjects at the more demanding level, i.e. Express or N(A), based on their performance in the specific subject at PSLE. Under Full SBB, eligible students can also offer Humanities subjects at a more demanding level from Secondary 2. In addition, students will be in mixed form classes where they can interact with peers of different strengths and interests. They will learn in their form classes subjects such as Art, Design and Technology, Food and Consumer Education, and Music, which will be offered as Common Curriculum subjects at lower secondary.

Full SBB was implemented in 28 secondary schools from 2020 and is being progressively rolled out to more secondary schools each year from 2022 to 2024.

To find out more about the school experience with Full SBB and the schools currently implementing Full SBB, please visit:



Full SBB

<https://go.gov.sg/moe-fsbb/>

3

STAYING RELEVANT - HOW DO I GET THERE?

By staying adaptable and resilient, I can continuously pursue opportunities for learning to develop myself.

To achieve my goals and aspirations, I can think about these questions:

- How can I adapt to my new environment?
- How can I be resilient when working towards my goals and aspirations?
- What can I do and who can I turn to when I am facing challenges?
- How can I work towards improving myself?



To find out more about how you can plan for your education and career journey, please visit:



MySkillsFuture Student Portal (Primary)
<https://go.gov.sg/MySFPri>



For more resources to support you in your journey after PSLE, please visit:



Transition to Secondary School
<https://go.gov.sg/transition-to-secondary>



Financial Matters
<https://go.gov.sg/sec-financial-matters>

As you think through your options, remember that there are people around you whom you can turn to for support. Speak with your parents/guardians, teachers and seniors to learn about their perspectives and experiences.

Be hopeful, resilient and adaptable as you explore the possibilities after PSLE!



Ministry of Education
SINGAPORE

1 North Buona Vista Drive Singapore 138675
Tel: 6872 2220 Website: www.moe.gov.sg

©2022 Education and Career Guidance Branch, Student Development Curriculum Division 1 (SDCD1), Ministry of Education, Singapore

All rights reserved. Nothing in here shall be reproduced or transmitted in any form or by any means, electronic or mechanical, including photocopying, recording or any other information storage and retrieval system, without the prior written permission of SDCD1, Ministry of Education, Singapore.

Printed using Forest Stewardship Council (FSC)-certified paper and environmentally responsible inks