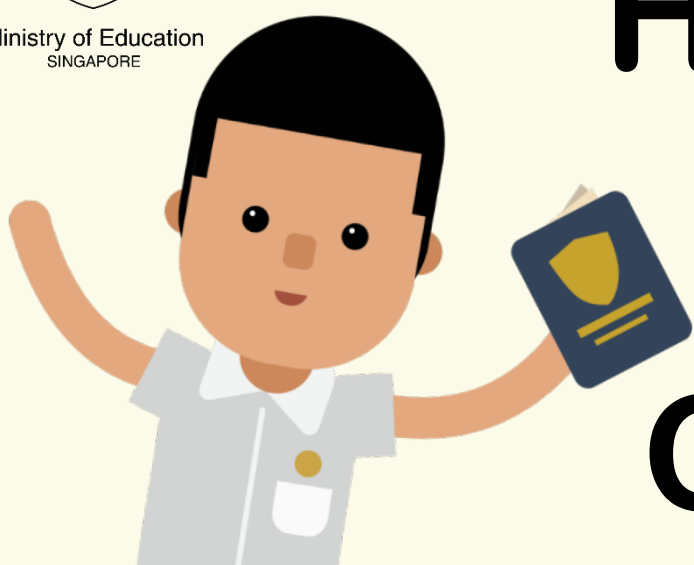




Ministry of Education
SINGAPORE



How to Use the PSLE Score Calculator

<https://go.gov.sg/psle-score-calculator>



Step 1: Select your child's AL for the different subjects

Using the dropdown menu, select your child's Achievement Level (AL) for the different subjects.

Select Score
Standard Level
AL 1 (> 90)
AL 2 (85-89)
AL 3 (80-84)
AL 4 (75-79)
AL 5 (65-74)
AL 6 (45-64)
AL 7 (20-44)
AL 8 (< 20)
Foundation Level
ALA (75-100)
ALB (30-74)
ALC (< 30)

English Language
Select Score

Mathematics
Select Score

Science
Select Score

Mother Tongue Language
Select Score

Step 2: Click applicable options for Mother Tongue Language



Click on the option that applies to your child regarding the Mother Tongue Language.

You do not need to select any of these options if this section is not applicable to your child. Click "Calculate".

- My child is / I am exempted from taking Mother Tongue Language, or is taking an Asian Language / Foreign Language in-lieu of a Mother Tongue Language
- My child is / I am taking Higher Mother Tongue Language

Calculate

Step 3: Shortlist your schools

An indicative PSLE Score will be calculated based on your input and you will see suggestions on some possible courses and schools that your child may be eligible for.

Note that the PSLE Score ranges shown are for last year's cohort and for reference only, as the schools' actual PSLE Score ranges this year will depend on the students' PSLE results and their school choices this year.

PSLE Score

Subject	AL
English Language	5
Mathematics	3
Science	2
Mother Tongue Language	6
PSLE Score*	16

* The PSLE Score is generated based on the AL scores of individual subjects keyed into the calculator.

Course Placement
Your child is / You are eligible for the Express course.

Third Language
Your child / You may be eligible to take an Asian Language (e.g. Arabic and Bahasa Indonesia) as a Third Language. Your child / You may also be eligible for the Chinese Special Programme and Malay Special Programme. [Find out more about the programmes here.](#)

Link to
SchoolFinder



The PSLE Score Calculator is linked to SchoolFinder.

Next Step:

Use SchoolFinder[^] to shortlist secondary schools based on your child's / your learning needs, pace, interests and strengths.

[Go to SchoolFinder](#)

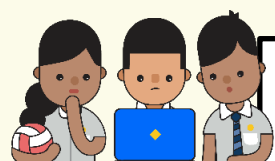
[How to Choose Secondary Schools](#)

[^] The secondary schools listed in SchoolFinder are based on the indicative PSLE Score ranges for the 2020 Secondary 1 Posting Exercise. The indicative PSLE Score ranges are guides and may vary from year to year, depending on students' PSLE results and their school choices for that year's Secondary 1 Posting Exercise.

Clicking "Go to SchoolFinder" will take you directly to the website, where you can explore suitable schools for your child and find out what they have to offer such as their school programmes, Co-Curricular Activities and location, in addition to the PSLE Score ranges.

Map Feature
Available!

The PSLE Score Calculator will also show the locations on the island map of possible schools your child could consider.



The PSLE Score ranges are a useful reference point for you and your child to consider secondary schools. Use this information, together with other factors such as the secondary schools' distinctive programmes, Co-Curricular Activities, ethos and cultures, to shortlist schools that would best fit the educational needs of your child.