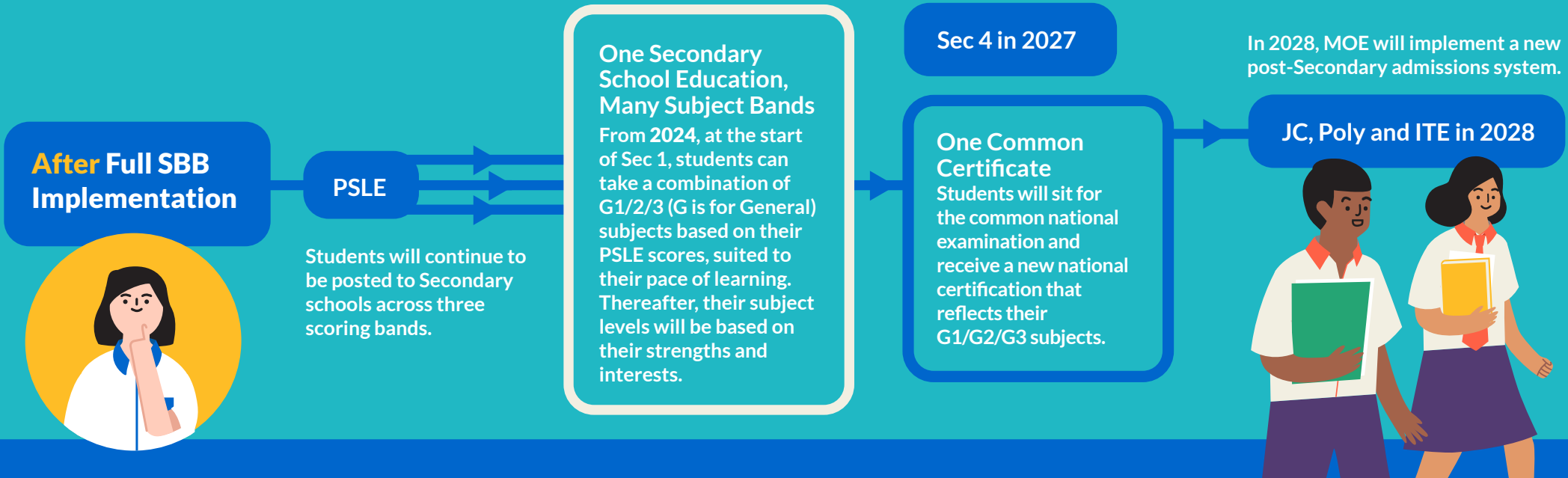
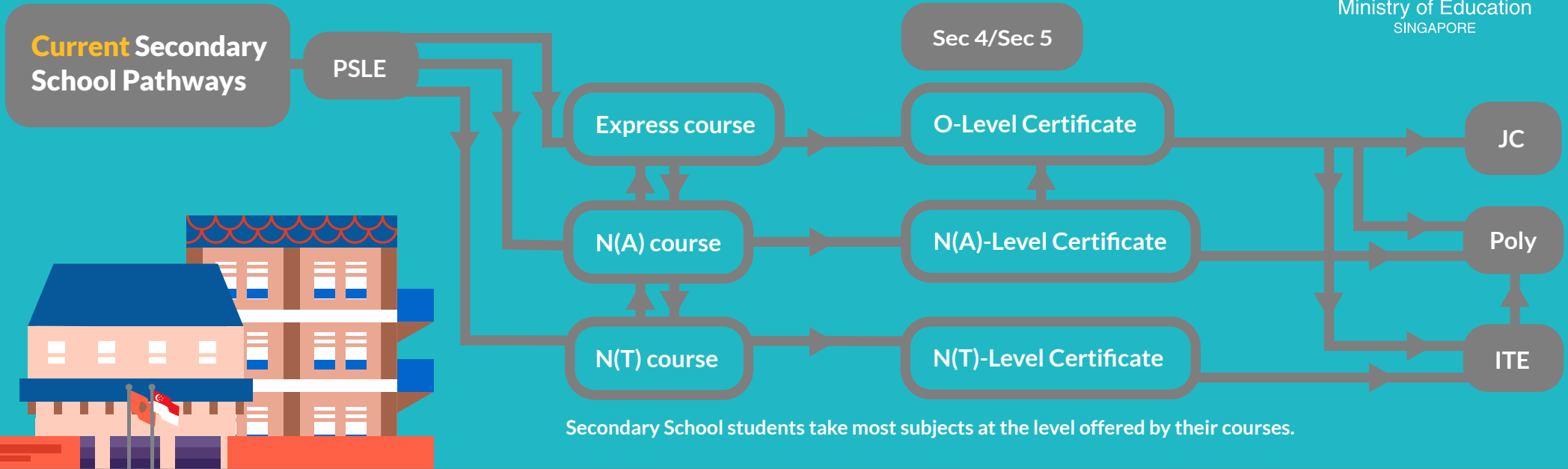


Remaking Secondary School Pathways



Ministry of Education
SINGAPORE



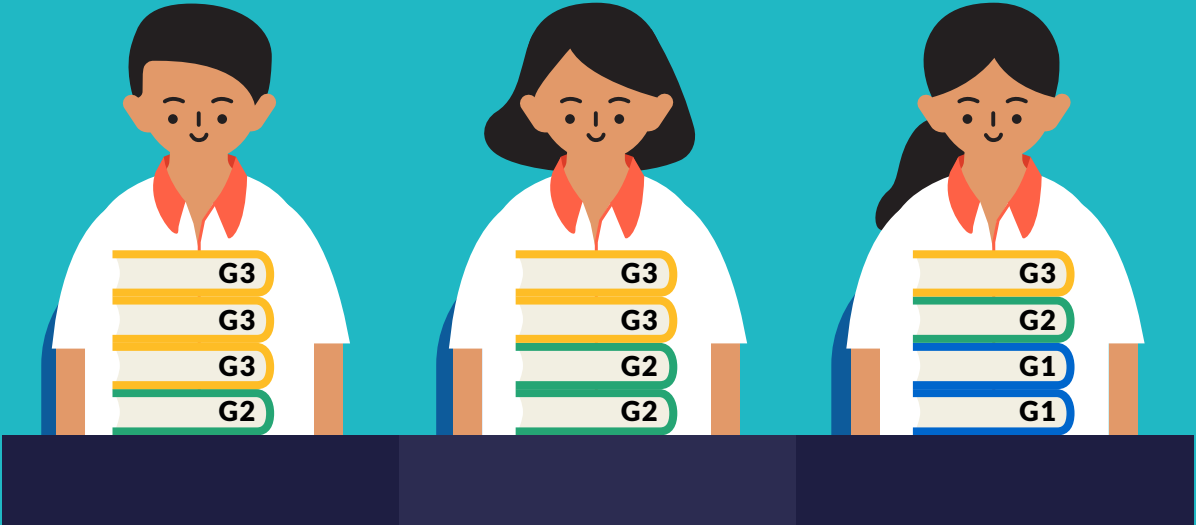
One Secondary Education, Many Subject Bands

With Full SBB, students can take subjects at G1/G2/G3 academic levels, which are mapped from today's N(T)-, N(A)-, and O-Level subjects respectively.

Start of Sec 1
Subject levels are assigned based on PSLE results



Beyond Start of Sec 1
Subject levels depend on students' abilities



For illustration purposes only. Number of books are not indicative of number of subjects taken.