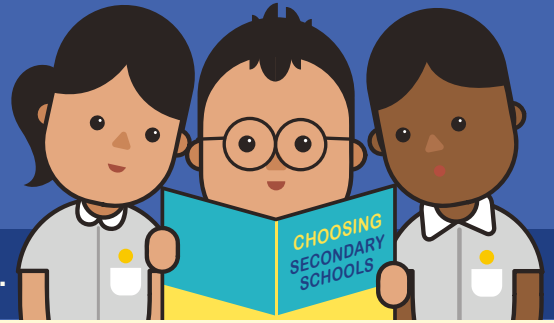


A SECONDARY SCHOOL THAT'S SUITABLE FOR YOUR CHILD

Help them match the school to their strengths and interests.



ASK:

What are their strengths, interests, and abilities?

- What kind of courses, programmes and opportunities will develop these?
- Will the pace of learning be suitable for them?



CONSIDER:

- **School Culture**
- **Courses**
- **Programmes, Subjects and CCAs Offered**
- **Location and Transport**
- **If your child has Special Educational Needs**

Select schools with specialised facilities or resources.



SUBMIT:

- **6 School Options**
So that your child is more likely to get into a school of choice.
- **Schools with Different Cut-Off Points**
Consider at least 2-3 schools where your child's PSLE Score is better than the school's Cut-Off Point.

REFER TO:



MOE's SchoolFinder

Check out schools based on subjects offered, Co-Curricular Activities, location and contact information.

YOUR RANKING OF SCHOOL CHOICES MATTERS.

Rank your preferred schools higher, particularly if your child's admission to the school could be subject to tie-breaking.

Do note that schools' PSLE Score ranges can vary up to a few points from year to year, since they depend on each cohort's performance and choice patterns.



Ministry of Education
SINGAPORE

