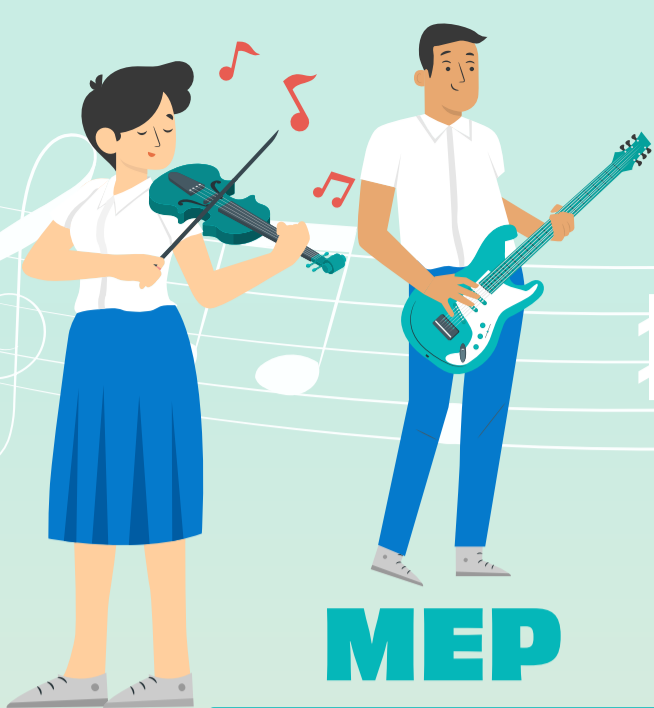


MOE MUSIC PROGRAMMES AND COURSES

SECONDARY LEVEL



MEP

4 years
From Sec 1

MUSIC ELECTIVE PROGRAMME

An in-depth and extended programme designed for musically inclined students that aims to develop students to be practitioners, scholars, advocates and leaders in music and the arts.

Students will be able to participate in MOE-organised and school-based music and leadership development opportunities, such as the *Combined EMP and MEP Schools' Camp for Secondary 3 students* and *Combined EMP and MEP Schools' Showcase*.



O-LEVEL

2 years
Upper Sec

O-LEVEL MUSIC

An upper secondary course subject which allows students who have interest, potential and talent to learn about music across different traditions, theories and practices through direct experiences in Listening, Performing and Composing.

Students will be able to participate in selected MOE-organised and school-based music and leadership development opportunities.

EMP

2 years
Upper Sec

ENHANCED MUSIC PROGRAMME

An upper secondary programme designed for musically inclined students to learn about music across different traditions, theories and practices through direct experiences in Listening, Performing and Composing.

Students will be able to participate in MOE-organised and school-based music and leadership development opportunities, such as the *Combined EMP and MEP Schools' Camp for Secondary 3 students* and *Combined EMP and MEP Schools' Showcase*.

SCHOOLS

EITHER enrol in one of the following schools that offer the MEP:

- Anglo-Chinese School (Independent)
- Catholic High School
- CHIJ St. Nicholas Girls' School (Secondary)
- Crescent Girls' School
- Dunman High School
- Methodist Girls' School (Secondary)
- Raffles Girls' School (Secondary)
- Raffles Institution
- Tanjong Katong Girls' School
- Temasek Junior College

MEP schools (except CHIJ SNGS) offer a DSA route via MEP. Please visit the schools' websites for more information and enquire with them directly.

For general information about the DSA, please visit: <https://beta.moe.gov.sg/secondary/dsa>

OR

Enrol in a secondary school that does not offer EMP or MEP, and attend music lessons at one of the following MEP Centres on a weekday afternoon:

- Anglo-Chinese School (Independent)
- Dunman High School

Students have to enrol in one of the following schools that offer the EMP:

- Ahmad Ibrahim Secondary School
- Chung Cheng High School (Main)
- St. Margaret's Secondary School
- Yuhua Secondary School



EITHER enrol in one of the following schools that offer O-Level Music:

- Anglican High School
- Ang Mo Kio Secondary School
- Holy Innocents' High School
- Maris Stella High School
- Nan Chiau High School
- Pasir Ris Crest Secondary School
- Paya Lebar Methodist Girls' School
- Singapore Chinese Girls' School
- St. Andrew's Secondary School

OR

Enrol in a secondary school* and attend music lessons at one of the following O-Level Music Centres on a weekday afternoon:

- Ahmad Ibrahim Secondary School
- Ang Mo Kio Secondary School
- Catholic High School
- CHIJ St. Nicholas Girls' School (Secondary)
- Chung Cheng High School (Main)
- Crescent Girls' School
- Methodist Girls' School (Secondary)
- St. Margaret's Secondary School
- Tanjong Katong Girls' School
- Yuhua Secondary School

*Except for schools that offer MEP, EMP or O-Level Music

OPTION 1

Enrol in schools offering MEP (listed above)

Students should seek admission into MEP schools that would cater to their abilities and interests by selecting them as their top choices. Upon enrolment, indicate interest in joining the programme to the MEP teachers during Secondary 1 registration.

Pass the Selection Exercise conducted by the secondary school either at the end of December or in early January.

OPTION 2

Apply for MEP Centres

From any school* that you are studying in, indicate interest in applying for the MEP Centres to your Music and Form teachers upon enrolment in Secondary 1.

Pass the Selection Exercise co-conducted by MOE and the Centres in Secondary 1 (Term 1).

**Except for schools that offer MEP and EMP*

Enrol in schools offering EMP (listed above)

Students should seek admission into EMP schools that would cater to their abilities and interests by selecting them as their top choices. Upon enrolment, indicate interest in joining the programme to the EMP teachers during Secondary 1 registration.

Pass the Selection Exercise conducted by the school in Secondary 2.



OPTION 1

Enrol in schools offering O-Level Music (listed above)

Students should seek admission into schools that offer O-Level Music which would cater to their abilities and interests by selecting them as their top choices. Indicate interest in joining the course to the Music teacher in Secondary 2.

Pass the Selection Exercise conducted by the school in Secondary 2 (Semester 2).

OPTION 2

Apply for O-Level Music Centres

From any school* that you are studying in, indicate interest in applying for the O-Level Music Centres to your Music and Form teachers in Secondary 2. Application opens in May each year.

Pass the Selection Exercise co-conducted by MOE and the Centres in Secondary 2 (Term 3).

**Except for schools that offer MEP, EMP, or O-Level Music*

GCE O-LEVEL HIGHER MUSIC EXAMINATION

IP students in Anglo-Chinese School Independent, Catholic High School, CHIJ St. Nicholas Girls' School, Dunman High School*, Methodist Girls' School and Centres will take the GCE O-Level Higher Music Examination in Secondary 4.

IP students in Raffles Girls' School, Raffles Institution and Temasek Junior College will sit for a school-based Music examination.

**Dunman High School students who wish to continue with MEP in Years 5 & 6 will sit for a school-based Music examination in Year 4 and take the A-Level Music Examination in Year 6.*

GCE O-LEVEL MUSIC EXAMINATION

OR

GCE O-LEVEL HIGHER MUSIC EXAMINATION

Students may be recommended by their teachers to take the Higher Music Examination. This is dependent on students' aptitude, interest and performance at the end of the Secondary 3 school-based examinations.

GCE O-LEVEL MUSIC EXAMINATION

OR

GCE O-LEVEL HIGHER MUSIC EXAMINATION

Students may be recommended by their teachers to take the Higher Music Examination. This is dependent on students' aptitude, interest and performance at the end of the Secondary 3 school-based examinations.

Students who offer Higher Music will be able to use their Higher Music grade as an R1/R3 (in lieu of their Humanities grade) in the calculation of L1R5 (for Junior Colleges) or R1/R2 in the calculation of L1R4 (for Millennia Institute).

For Polytechnics, Higher Music and Music are considered R2 in the calculation of EL1R2B2-A and EL1R2B2-B.

