

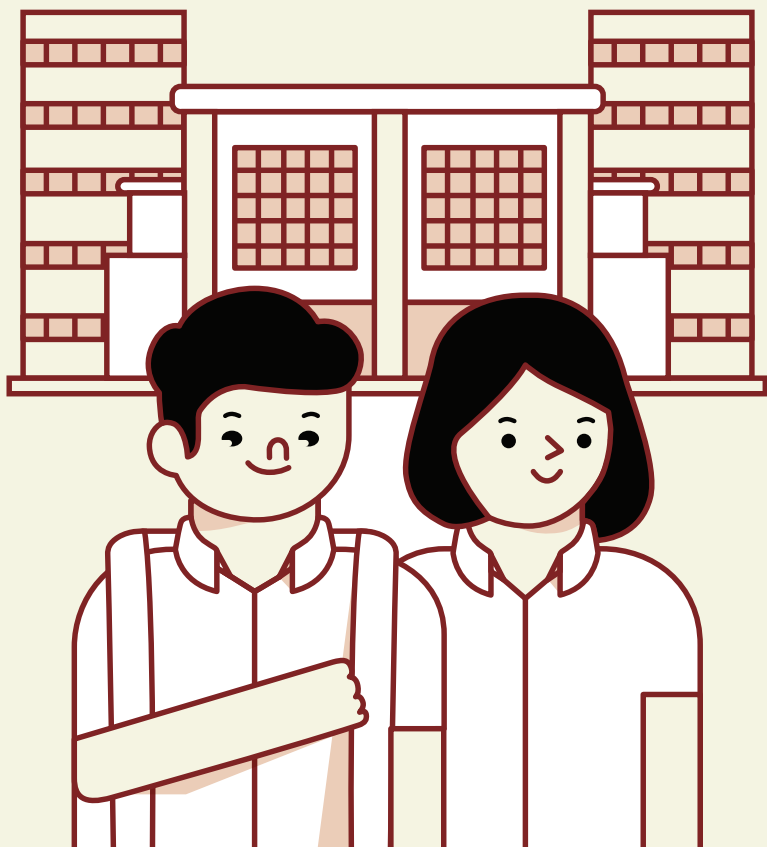
**A Guide to**

# **Post-Secondary**

# **Admissions**

# **Exercises**

A list of pathways that you could consider after secondary school



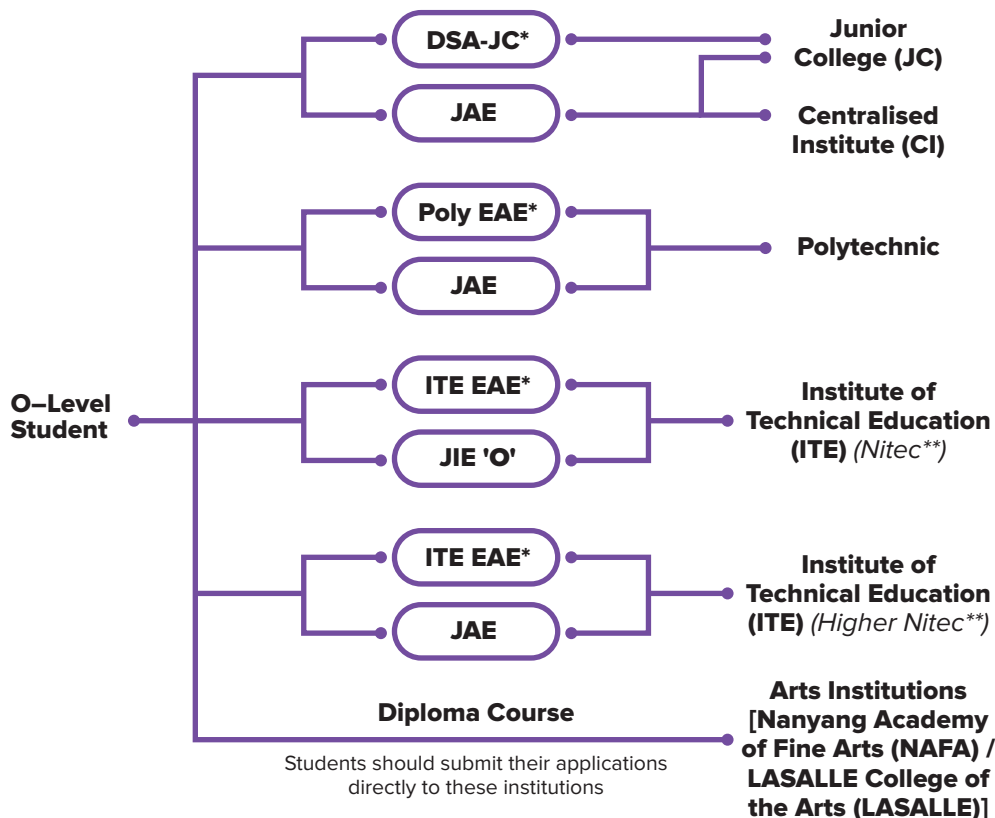
Ministry of Education  
SINGAPORE

# Admissions Exercises for O-Level Students

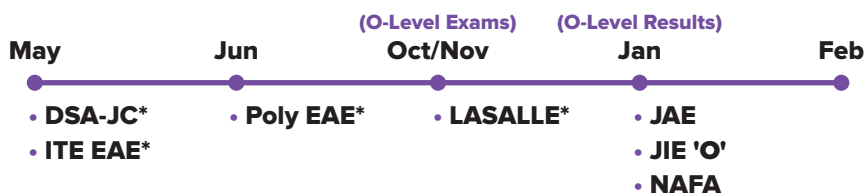
Where am I now?

What can I apply for?

Where do I want to go?



## When can I apply?



\*Students can apply through these admissions exercises before their O-Level examinations.

\*\*Certain Nitec and Higher Nitec courses are available in traineeship mode. For more information on applying to these courses, you can visit <https://www.ite.edu.sg/admissions/traineeship>

# Details of Admissions Exercises

## Arts Institutions – NAFA/ LASALLE

GCE O-Level holders with the aptitude and interest to pursue the creative arts at the tertiary level may apply for diploma programmes at the Arts Institutions (AIs). Each AI runs its own admissions exercise, and interested students should apply directly to the institution.

**NAFA:** [www.nafa.edu.sg](http://www.nafa.edu.sg)

**LASALLE:** [www.lasalle.edu.sg](http://www.lasalle.edu.sg)

## DSA-JC – Direct School Admission for Junior Colleges

DSA provides students with the opportunity to seek admission to JCs based on a broader range of talents and achievements.



[go.gov.sg/applyjcdsa](http://go.gov.sg/applyjcdsa)

## ITE EAE – ITE Early Admissions Exercise

ITE EAE is an aptitude-based admissions exercise that allows students to apply and receive conditional offers for admission to ITE based on their aptitude and interest, prior to receiving their final O-Level examination results. It allows students to demonstrate their aptitudes and interests apart from academic grades, thus allowing a wider range of talents to be recognised.



[go.gov.sg/iteeae](http://go.gov.sg/iteeae)

## JAE – Joint Admissions Exercise

JAE enables GCE O-Level holders to apply for admission to courses offered by JC, MI, Polytechnics and ITE *Higher Nitec* courses.



[go.gov.sg/applyjae](http://go.gov.sg/applyjae)

## JIE 'O' – Joint Intake Exercise 'O'

The JIE 'O' is conducted to enable GCE O-Level holders to apply for the two-Year *Nitec* courses conducted by ITE.



[go.gov.sg/applyjie](http://go.gov.sg/applyjie)

## Poly EAE – Polytechnic Early Admissions Exercise

Poly EAE is an aptitude-based admissions exercise that allows students to apply for and receive conditional offers for admission to polytechnics prior to receiving their final grades. It allows students to demonstrate their aptitudes and interests apart from academic grades, thus allowing a wider range of talents to be recognised.



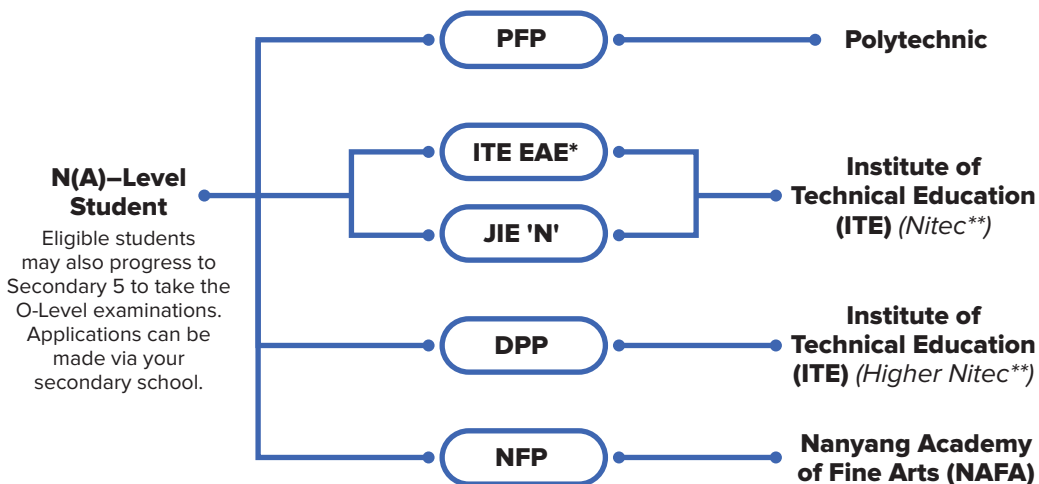
[go.gov.sg/polyeae](http://go.gov.sg/polyeae)

# Admissions Exercises for N-Level Students

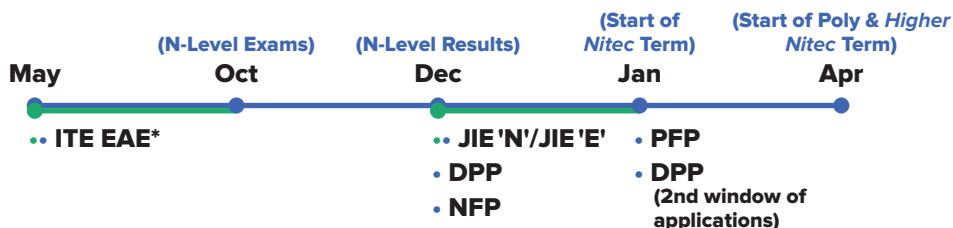
Where am I now?

What can I apply for?

Where do I want to go?



## When can I apply?



\*Students can apply through these admissions exercises before their examinations.

# Details of Admissions Exercises

## DPP – Direct-Entry-Scheme to Polytechnic Programme

DPP allows Secondary 4N(A) students to be admitted directly into a two-year *Higher Nitec* programme at ITE without having to sit for the O-Level examinations or undergo a *Nitec* programme.

DPP students who successfully complete their *Higher Nitec* courses at ITE and attain the required qualifying Grade Point Average (GPA) scores are guaranteed a place in a polytechnic diploma course mapped to their *Higher Nitec* course.



[go.gov.sg/applydpp](https://go.gov.sg/applydpp)

## JIE 'N'/JIE 'E' – Joint Intake Exercise

The JIE 'N' is for GCE N(T)/N(A)-Level holders to apply for the two-year *Nitec* course.

The JIE 'E' is for GCE N(T) students to apply for the three-year *Nitec* course with Enhanced *Nitec* Foundation Programme.



[go.gov.sg/applyjie](https://go.gov.sg/applyjie)

## ITE EAE – ITE Early Admissions Exercise

ITE EAE is an aptitude-based admissions exercise that allows students to apply and receive conditional offers for admission to ITE based on their aptitude and interest, prior to receiving their final GCE N-Level examination results. It allows students to demonstrate their aptitudes and interests apart from academic grades, thus allowing a wider range of talents to be recognised.



[go.gov.sg/iteeae](https://go.gov.sg/iteeae)

## NFP – NAFA Foundation Programme

NFP is a one-year practice-based programme that prepares N(A)-Level holders to pursue a diploma in the creative arts. NFP students who successfully complete the programme will be offered a place in their chosen diploma course



[go.gov.sg/applynafafp](https://go.gov.sg/applynafafp)

## PFP – Polytechnic Foundation Programme

PFP is a one-year programme that offers a practice-oriented curriculum taught by polytechnic lecturers to better prepare polytechnic-bound N(A) students for entry into relevant polytechnic diploma courses. PFP students are given provisional places in diploma programmes, subject to them passing all modules in the one-year PFP.



[go.gov.sg/pfp](https://go.gov.sg/pfp)

# Wondering where you can go after ITE, Poly or JC/CI?

For more information, visit:

- Polytechnics:**
  - [go.gov.sg/apply-np](https://go.gov.sg/apply-np)
  - [go.gov.sg/apply-nyp](https://go.gov.sg/apply-nyp)
  - [go.gov.sg/apply-rp](https://go.gov.sg/apply-rp)
  - [go.gov.sg/apply-sp](https://go.gov.sg/apply-sp)
  - [go.gov.sg/apply-tp](https://go.gov.sg/apply-tp)
- ITE:** [www.ite.edu.sg](http://www.ite.edu.sg)
- LASALLE:** [www.lasalle.edu.sg](http://www.lasalle.edu.sg)
- NAFA:** [www.nafa.edu.sg](http://www.nafa.edu.sg)
- NUS:** [go.gov.sg/applynus](https://go.gov.sg/applynus)
- NTU:** [go.gov.sg/applyntu](https://go.gov.sg/applyntu)
- SMU:** [go.gov.sg/applysmu](https://go.gov.sg/applysmu)
- SUSS:** [go.gov.sg/applysuss](https://go.gov.sg/applysuss)
- SUTD:** [go.gov.sg/applysutd](https://go.gov.sg/applysutd)
- SIT:** [go.gov.sg/applysit](https://go.gov.sg/applysit)
- SkillsFuture  
Work-Study  
Programmes:** [go.gov.sg/applyworkstudy](https://go.gov.sg/applyworkstudy)

