

PARENT KIT



Ministry of Education
SINGAPORE

Supporting Our Children on Results Day

22 November 2022

Our children will be receiving their Primary School Leaving Examination (PSLE) results tomorrow.

Our response and support, regardless of their results, will mean a lot to them.

Let's continue to show C.A.R.E. as they receive their results and explore secondary school options.

1. Receiving PSLE Results

- Celebrate our children's efforts. Avoid comparing them with peers or labelling what makes a "good" or "bad" PSLE Score.
- Assure them that our love and care for them are not conditional – we are here to support them regardless of the outcome.
- Recognise our children are performing to the best of their abilities and let them know in our own simple ways that we are proud of them.
- Encourage our children. Remind them that they are talented in their own ways; and good character, values, and success in life are not measured through academic achievements.



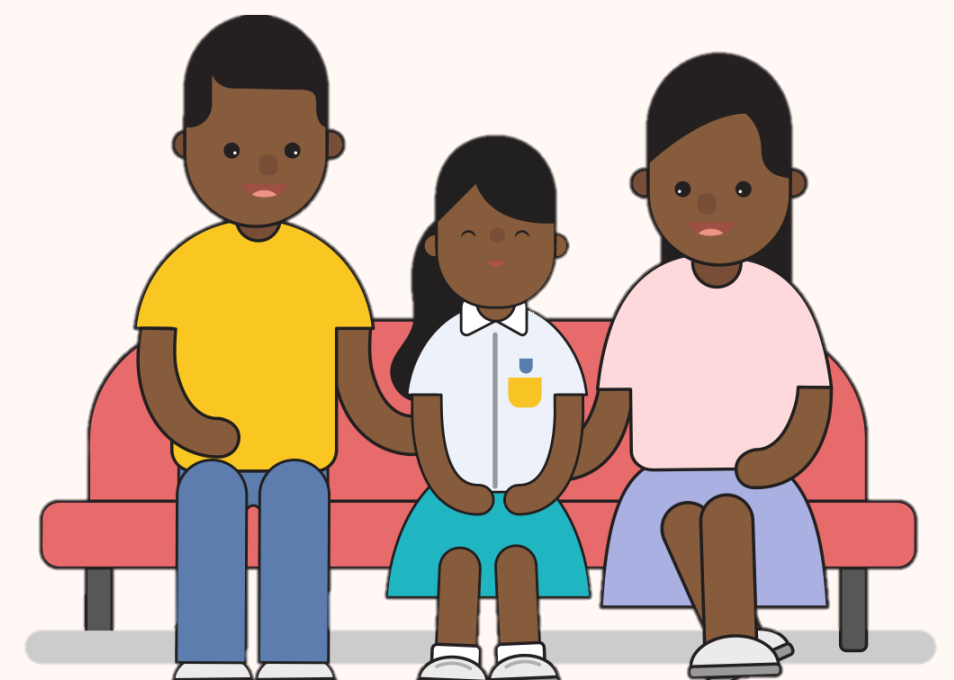
Pen an affirmation note for our children

Affirm and express our care for our children through [these card templates](#).



Use these 3 simple tips

Try out an activity for your child to express themselves 😊



2. Exploring secondary school options



- Choose suitable secondary schools for our children together. Their voices matter.
- Ask our children questions on what matters to them in school choices - CCAs, school culture, subjects, and location; and listen attentively to their considerations.
- Remember to use all 6 secondary school options with a range of Cut-Off Points so that our children are more likely to get their school of choice.
- Empower our children by encouraging them to research on secondary schools and discuss their considerations.



Check out these useful websites/tools:

MOE S1 Posting Website

Explore schools and learn how posting works

[Click Here](#) 

MySkillsFuture

Find out what your child is interested in, and what they are good at to inform your choice

[Click Here](#) 

Full Subject-Based Banding (SBB) Microsite

Two-thirds of our secondary schools offer Full Subject-Based Banding (SBB) – learn more about Full SBB

[Click Here](#) 

“These are our children. Even after their PSLE, Poly, ITE, or University, they are still our children. Even when they have their own children, they are still our children. Our love and care for them are unconditional.”

- Minister for Education, Mr Chan Chun Sing

