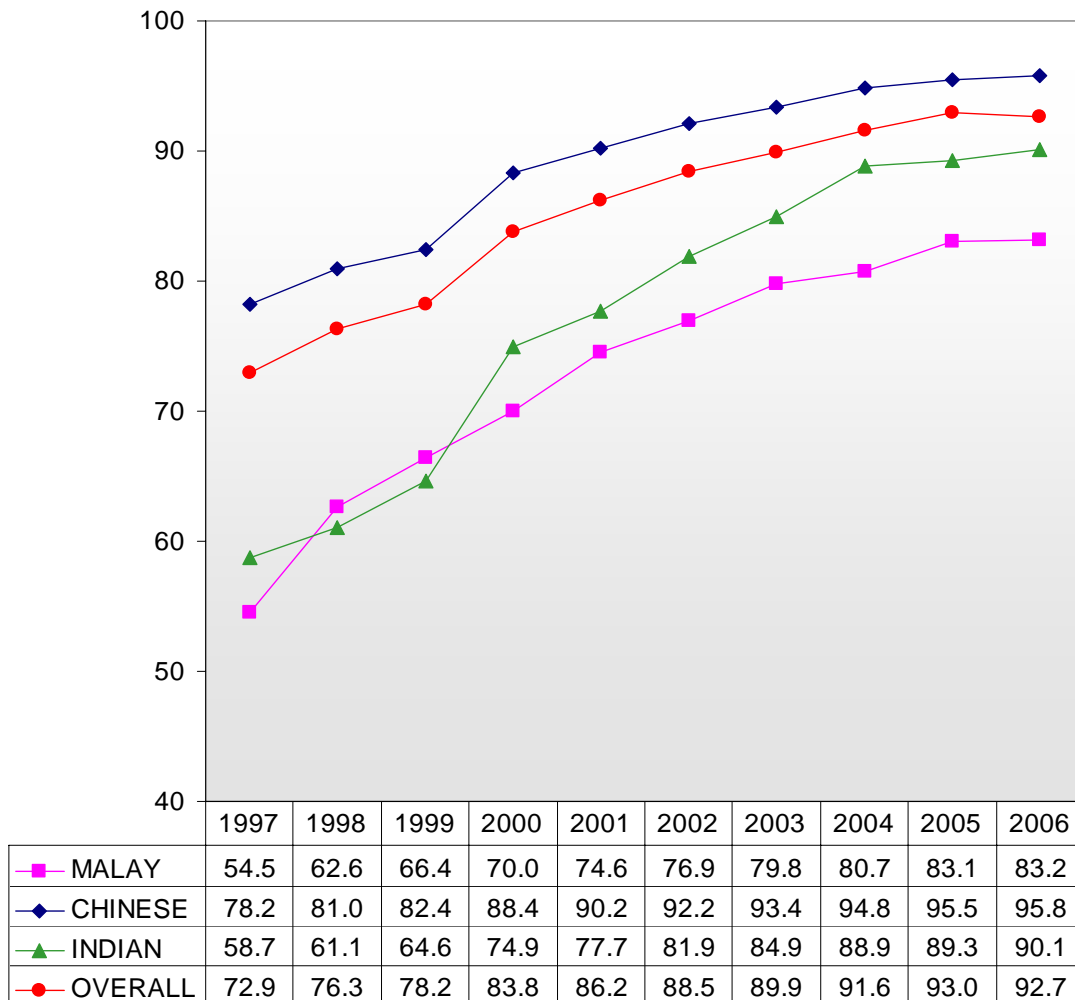


**Chart D: Percentage of P1 Cohort Admitted to Post-Secondary Institutions<sup>1</sup>**



1 Junior Colleges, Centralised Institute, Polytechnics, ITE, LaSalle College of the Arts, Nanyang Academy of Fine Arts and other private educational organisations offering courses at post-secondary level.

2 Figures for 2002 – 2006 are preliminary.

3 Figures from 2000 include participation in LaSalle College of the Arts, Nanyang Academy of Fine Arts and other private educational organisations, and also take into account students who left the country.