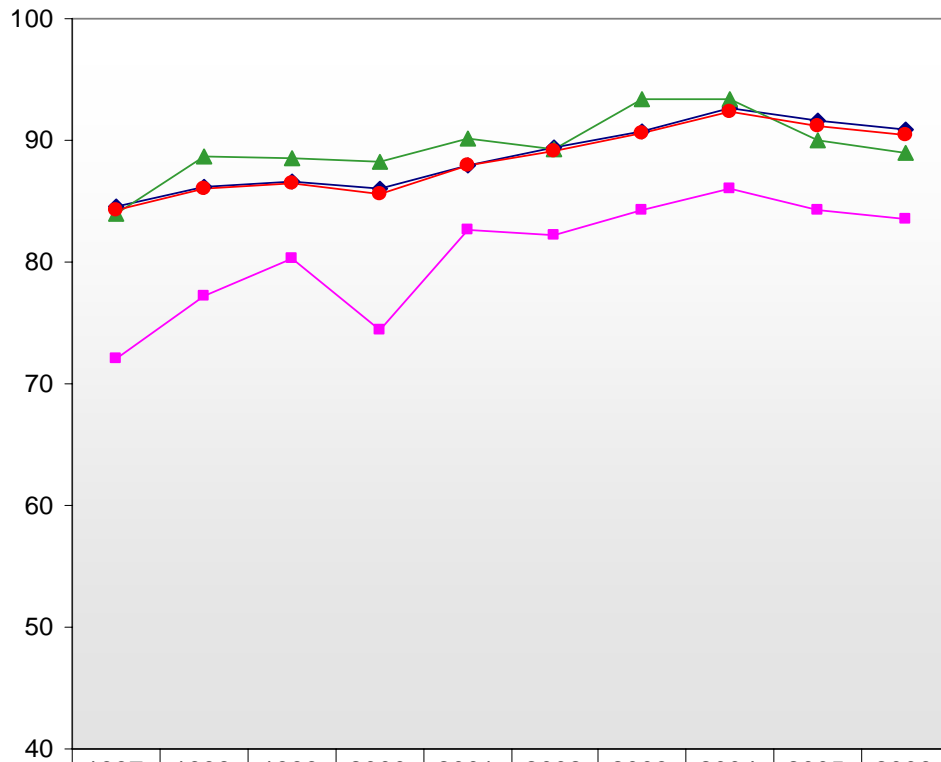


Chart C1: Percentage of GCE 'A' Level Students with At Least 2 'A' and 2 'AO' Level Passes Including General Paper



	1997	1998	1999	2000	2001	2002	2003	2004	2005	2006
—■— MALAY	72.0	77.2	80.3	74.4	82.7	82.2	84.3	86.1	84.2	83.6
—◆— CHINESE	84.5	86.2	86.6	86.0	87.9	89.4	90.7	92.6	91.6	90.9
—▲— INDIAN	84.0	88.7	88.6	88.2	90.1	89.2	93.4	93.4	90.0	88.9
OTHERS	93.7	89.1	95.1	91.6	94.6	93.1	89.8	96.4	95.3	92.0
—●— OVERALL	84.2	86.0	86.5	85.6	87.9	89.1	90.6	92.3	91.2	90.5