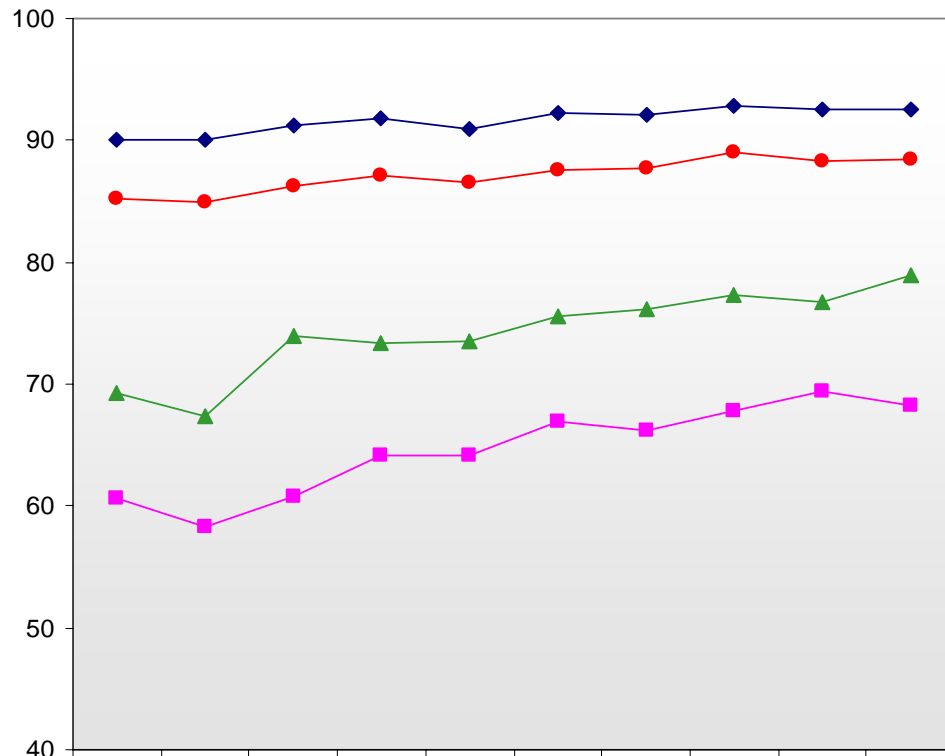


Chart B5: Percentage of GCE 'O' Level Students Who Passed Mathematics



	1997	1998	1999	2000	2001	2002	2003	2004	2005	2006
—■— MALAY	60.7	58.3	60.8	64.2	64.1	66.9	66.2	67.8	69.4	68.3
—◆— CHINESE	90.0	90.1	91.2	91.8	91.0	92.2	92.1	92.8	92.5	92.6
—▲— INDIAN	69.3	67.3	73.9	73.3	73.5	75.6	76.1	77.3	76.8	79.0
—■— OTHERS	75.4	82.3	77.8	84.5	83.0	85.5	85.5	85.3	87.4	85.6
—●— OVERALL	85.2	84.9	86.3	87.1	86.6	87.5	87.7	89.0	88.3	88.4

1 Figures from 2005 onwards exclude IP students.