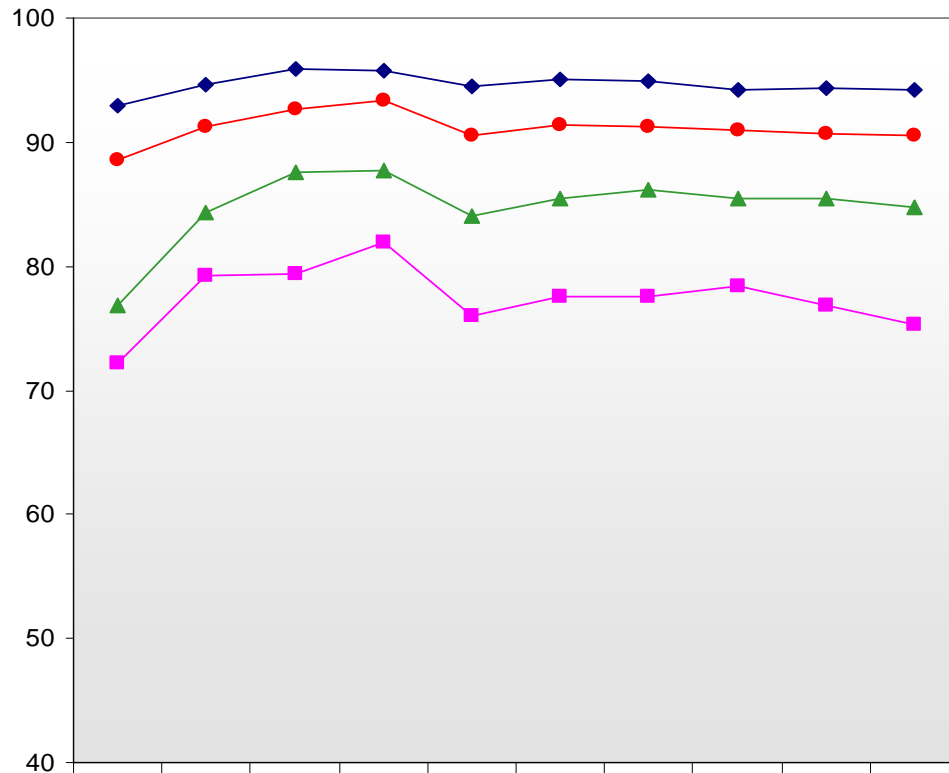


**Chart A5: Percentage of PSLE Students Who Scored A\* - C in Science**



	1997	1998	1999	2000	2001	2002	2003	2004	2005	2006
■ MALAY	72.2	79.2	79.4	82.0	76.0	77.6	77.5	78.4	76.8	75.3
◆ CHINESE	93.0	94.7	95.9	95.7	94.5	95.0	94.9	94.2	94.3	94.2
▲ INDIAN	76.8	84.4	87.6	87.7	84.1	85.4	86.2	85.5	85.5	84.8
OTHERS	89.8	91.1	93.5	94.6	94.6	94.5	92.3	92.3	93.5	93.1
● OVERALL	88.6	91.2	92.7	93.3	90.5	91.4	91.3	90.9	90.7	90.5

1 Percentages exclude EM3 students.