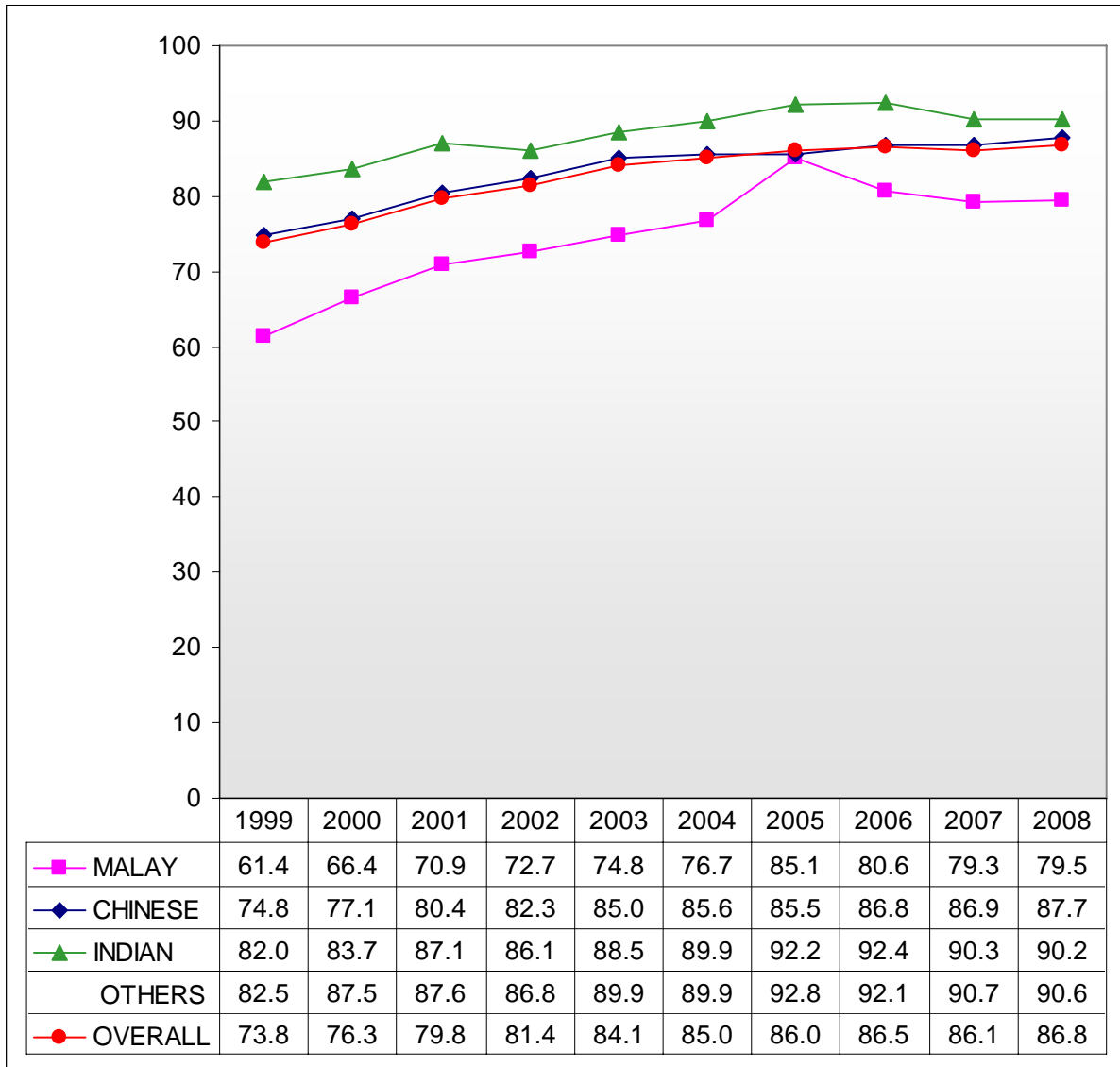
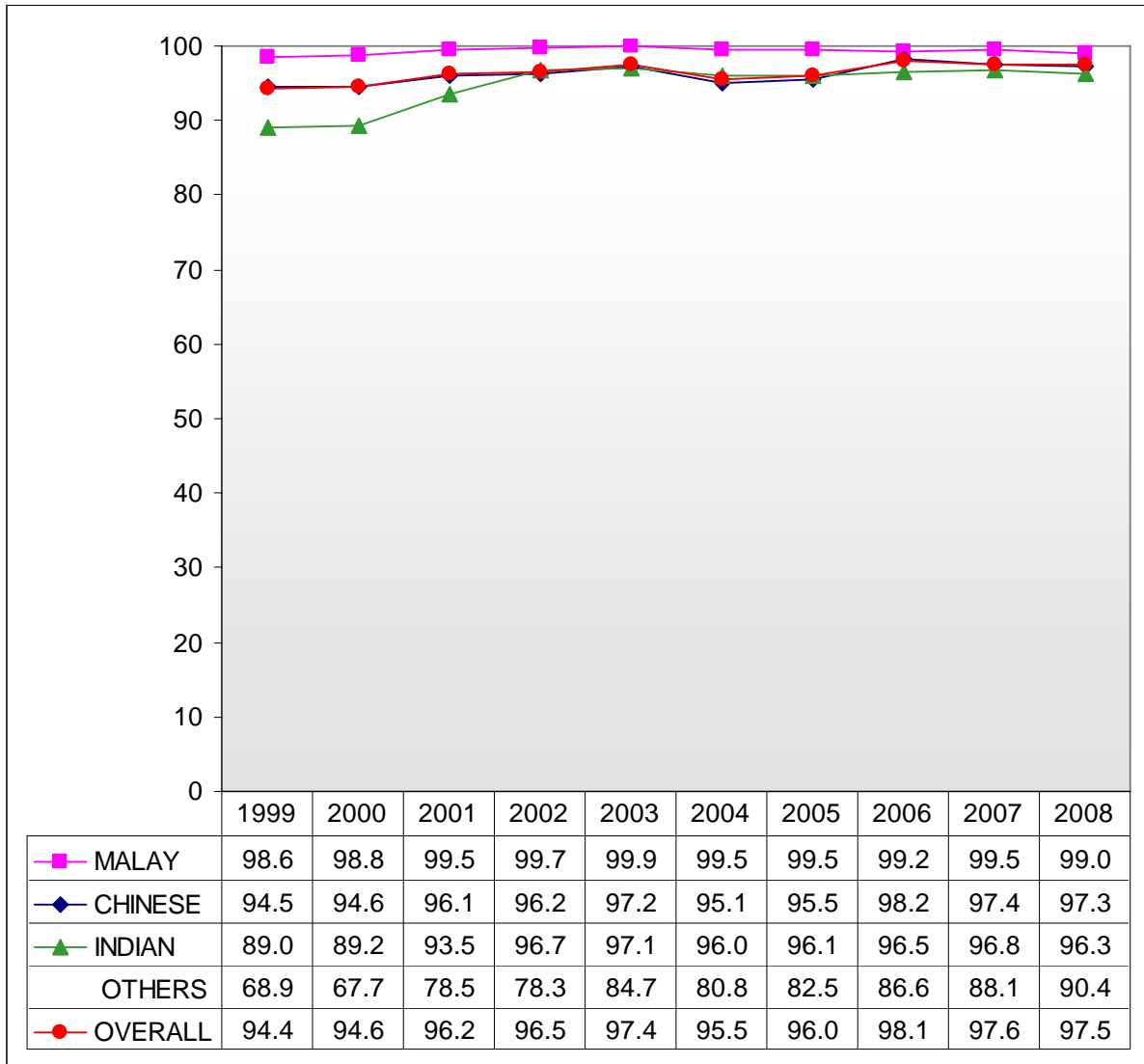


Chart B3: Percentage of GCE 'O' Level Students Who Passed English Language



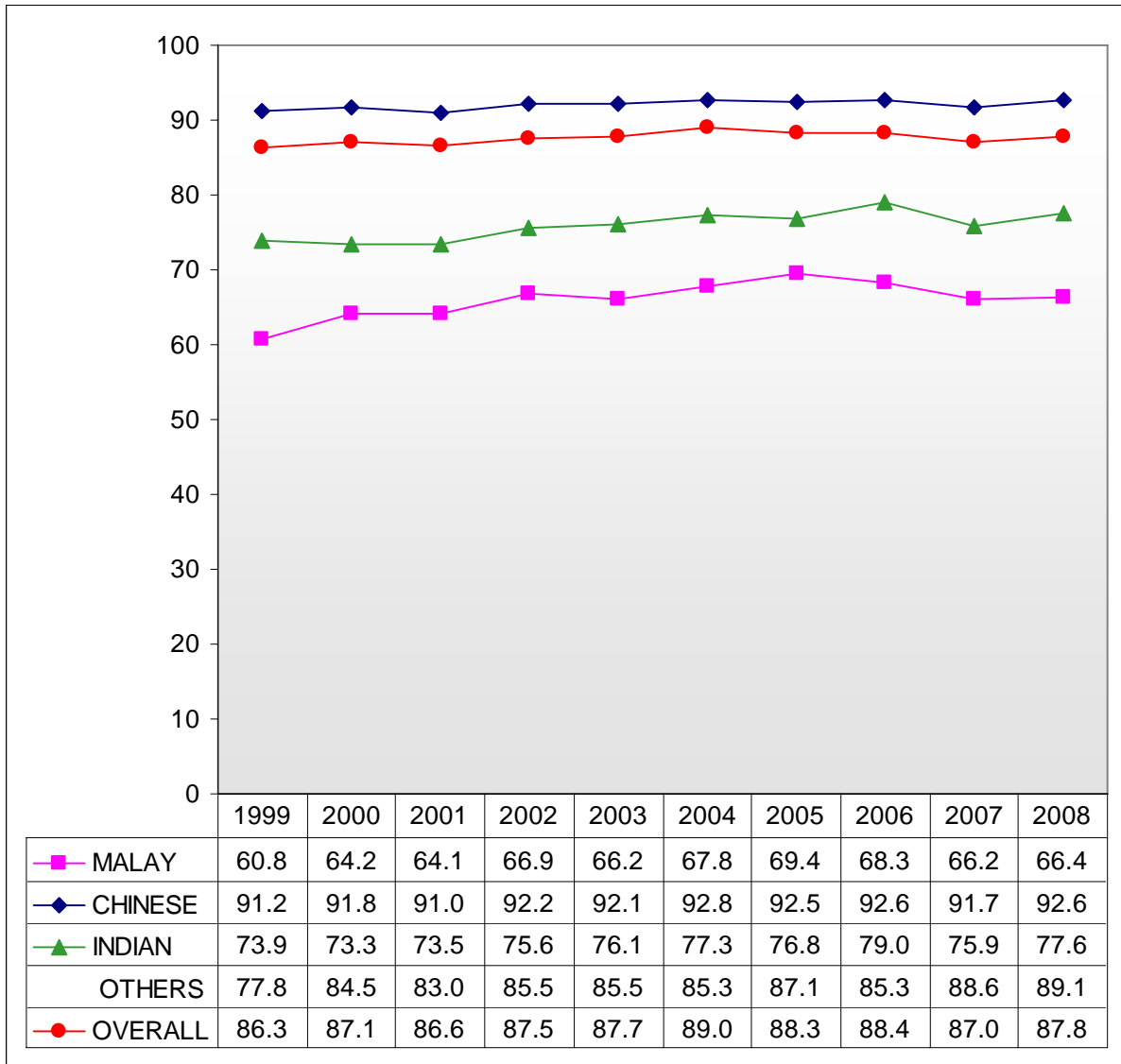
1 Figures from 2005 onwards exclude IP students.

Chart B4: Percentage of GCE 'O' Level Students Who Passed Mother Tongue Language



1 Figures from 2005 onwards exclude IP students.

Chart B5: Percentage of GCE 'O' Level Students Who Passed Mathematics



1 Figures from 2005 onwards exclude IP students.