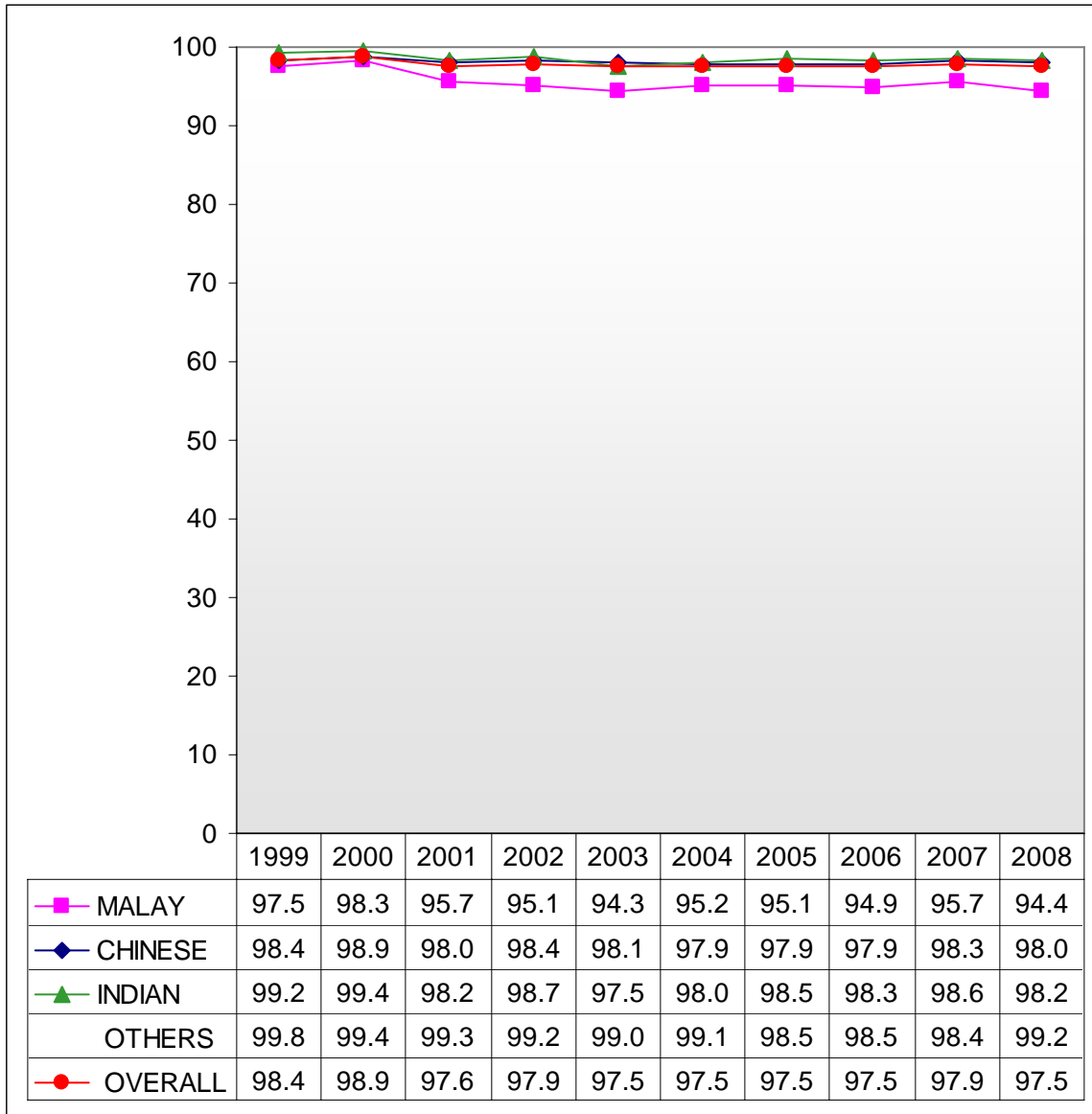
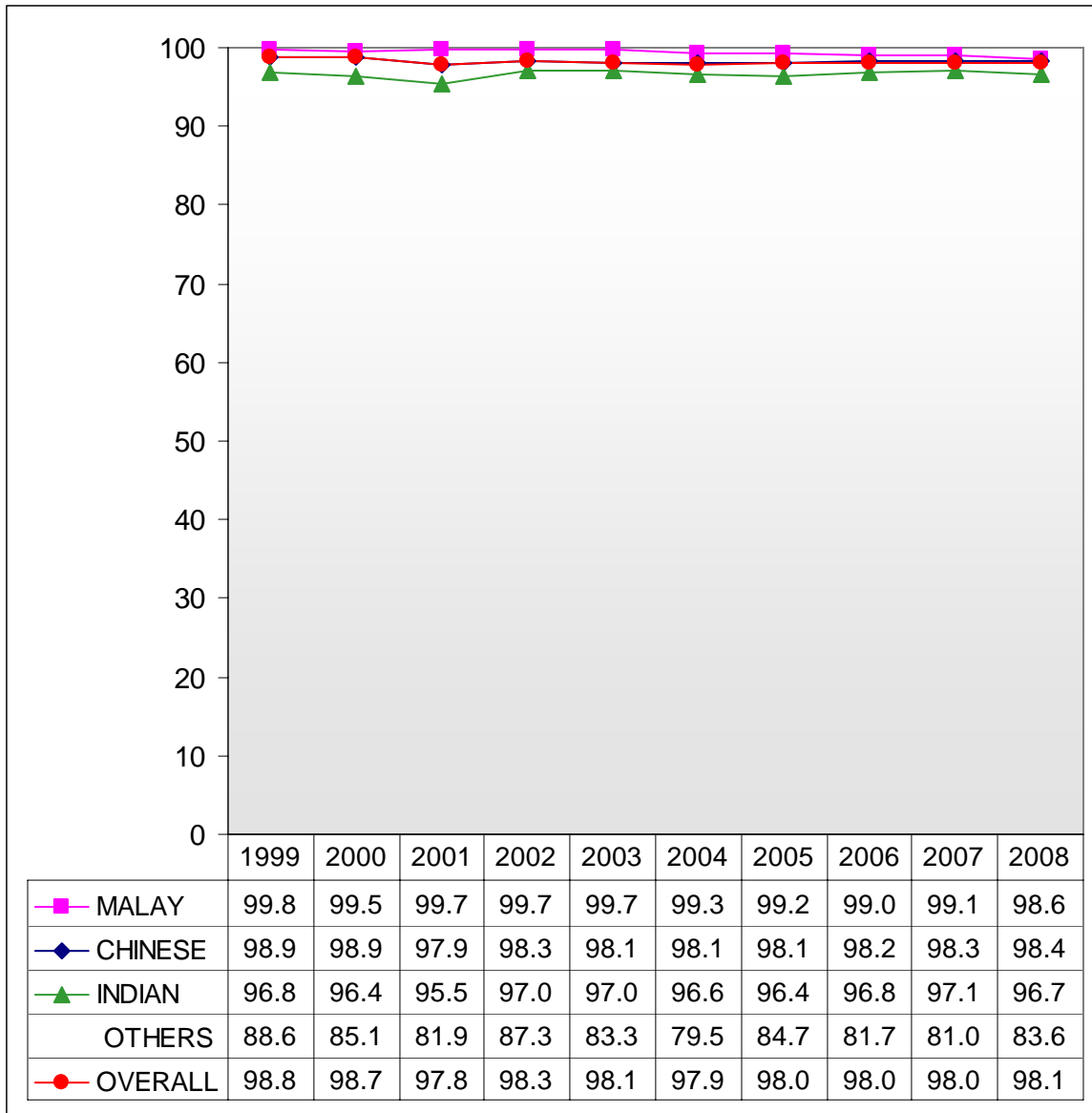


**Chart A2: Percentage of PSLE Students Who Scored A\*–C in English Language**



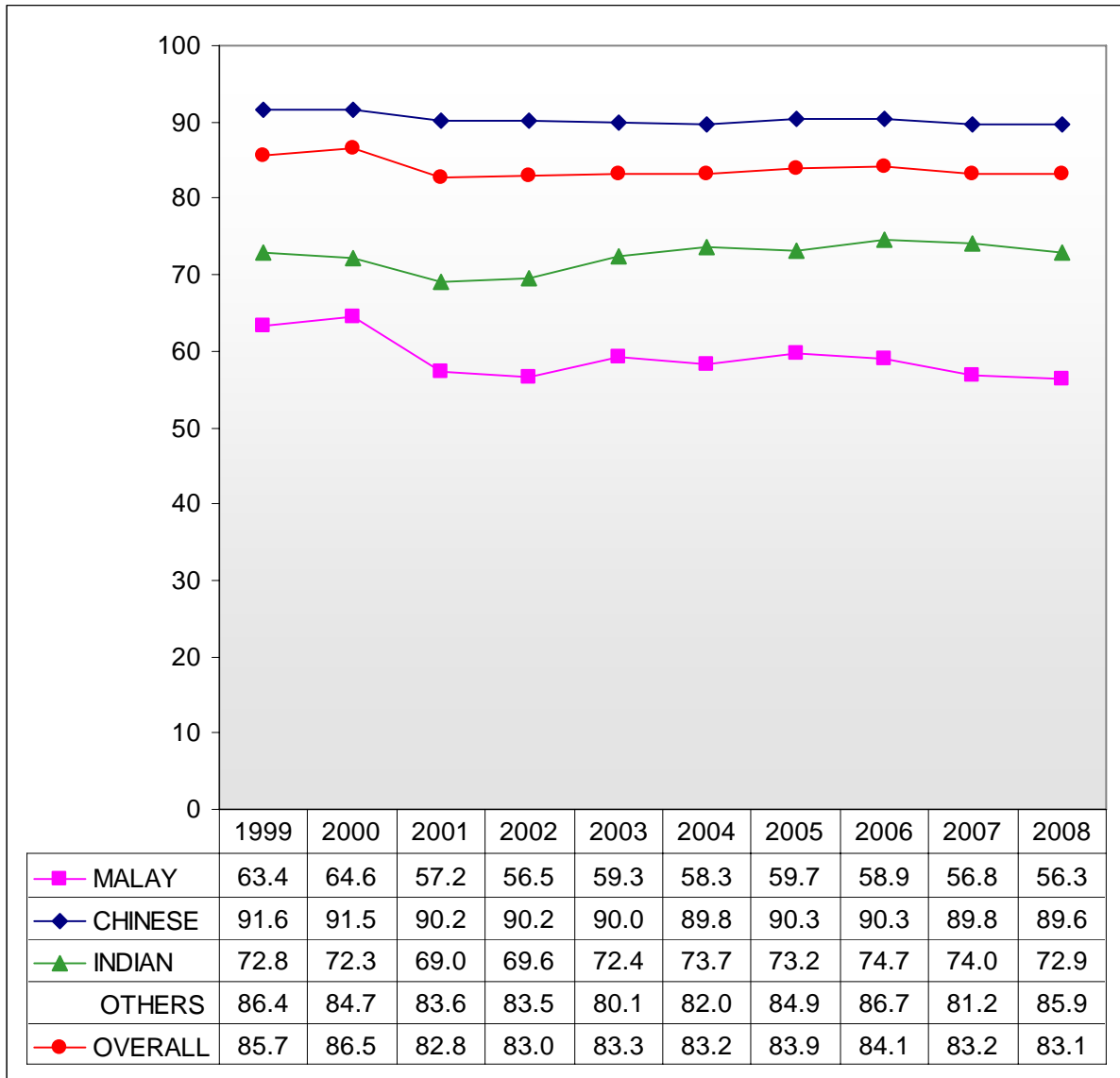
- 1 Percentages exclude EM3 students.
- 2 The first batch of students under the adjustment of the promotion criteria from P5 to P6 sat for PSLE in 2001.

**Chart A3: Percentage of PSLE Students Who Scored A\*–C in Mother Tongue Language**



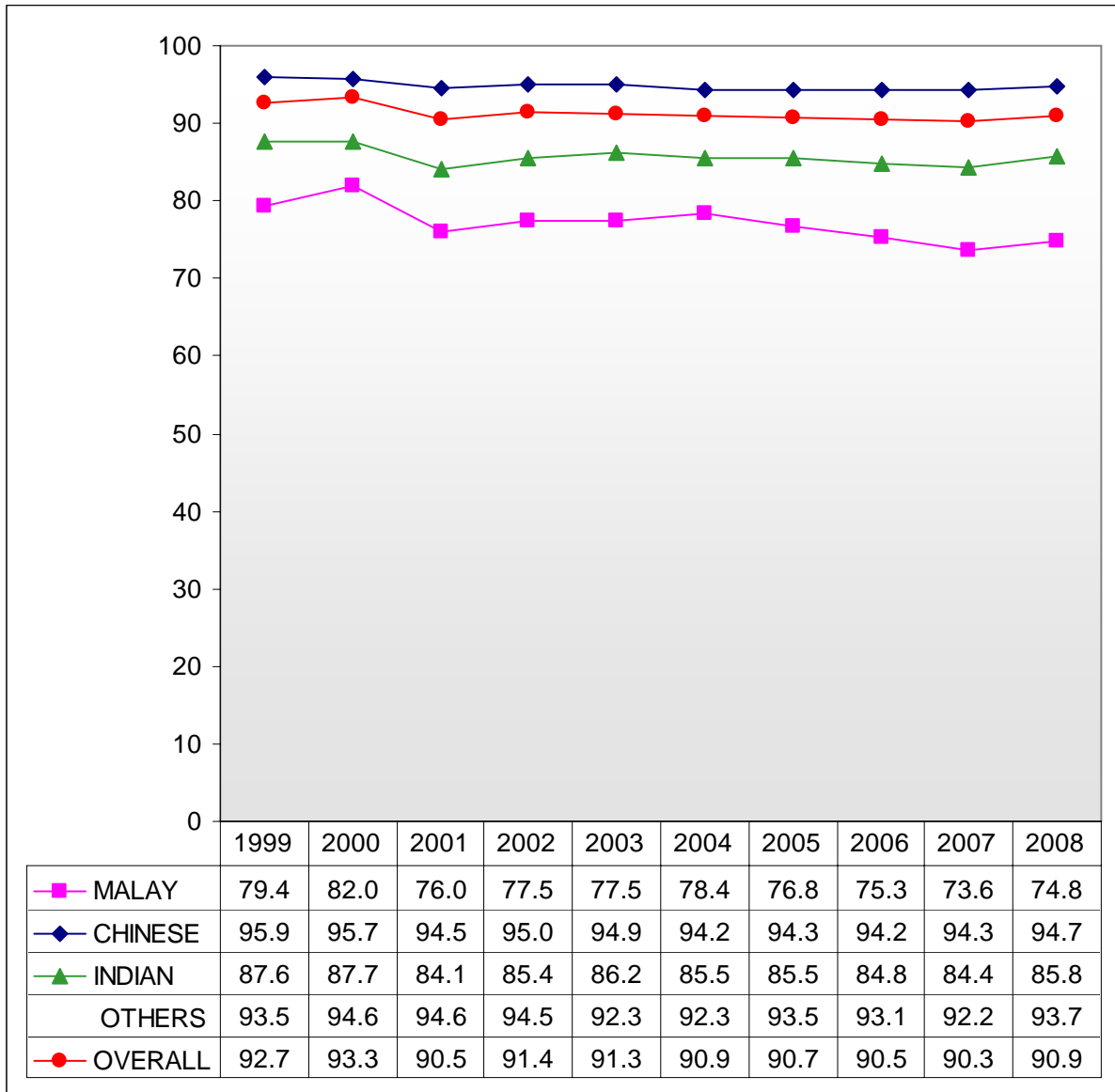
- 1 Percentages exclude EM3 students.
- 2 The first batch of students under the adjustment of the promotion criteria from P5 to P6 sat for PSLE in 2001.

**Chart A4: Percentage of PSLE Students Who Scored A\*–C in Mathematics**



- 1 Percentages exclude EM3 students.
- 2 The first batch of students under the adjustment of the promotion criteria from P5 to P6 sat for PSLE in 2001.

**Chart A5: Percentage of PSLE Students Who Scored A\*–C in Science**



- 1 Percentages exclude EM3 students.
- 2 The first batch of students under the adjustment of the promotion criteria from P5 to P6 sat for PSLE in 2001.