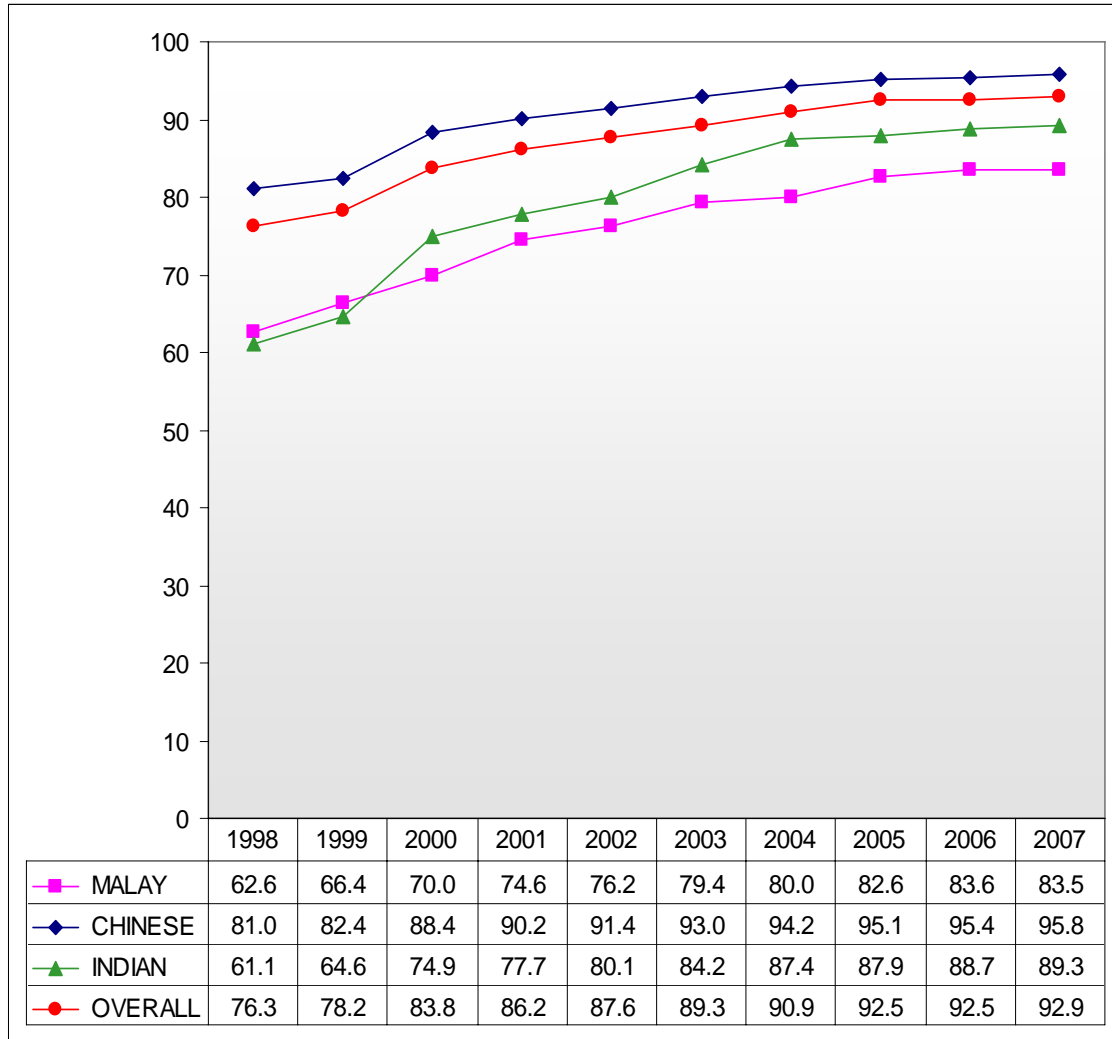


Chart D: Percentage of P1 Cohort Admitted to Post-Secondary Institutions¹



- 1 Junior Colleges, Centralised Institute, Polytechnics, ITE, LaSalle College of the Arts, Nanyang Academy of Fine Arts and other private educational organisations offering courses at post-secondary level.
- 2 Figures refer to the percentage of the P1 cohort from 1997 who were admitted to post-secondary educational institutions in 2007.
- 3 Figures for 2003 – 2007 are preliminary.
- 4 Figures from 2000 include participation in LaSalle College of the Arts, Nanyang Academy of Fine Arts and other private educational organisations, and also take into account students who left the country.