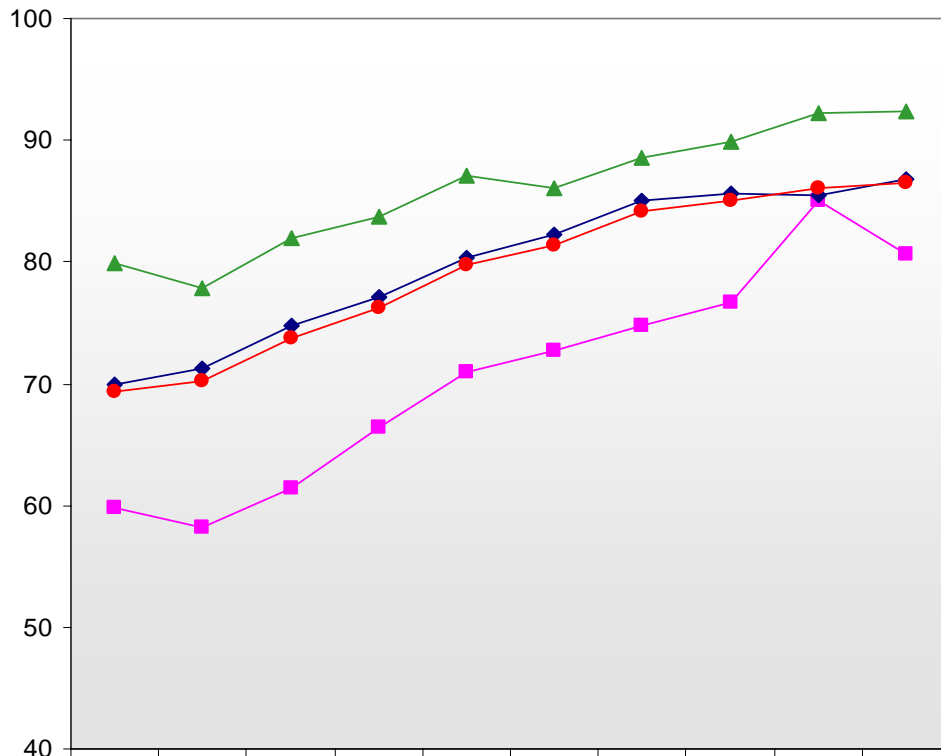


Chart B3: Percentage of GCE 'O' Level Students Who Passed English Language



	1997	1998	1999	2000	2001	2002	2003	2004	2005	2006
■ MALAY	59.8	58.2	61.4	66.4	70.9	72.7	74.8	76.7	85.1	80.6
◆ CHINESE	69.9	71.2	74.8	77.1	80.4	82.3	85.0	85.6	85.5	86.8
▲ INDIAN	79.9	77.8	82.0	83.7	87.1	86.1	88.5	89.9	92.2	92.4
OTHERS	79.2	82.1	82.5	87.5	87.6	86.8	89.9	89.9	93.1	92.4
● OVERALL	69.4	70.2	73.8	76.3	79.8	81.4	84.1	85.0	86.0	86.5

1 Figures from 2005 onwards exclude IP students.