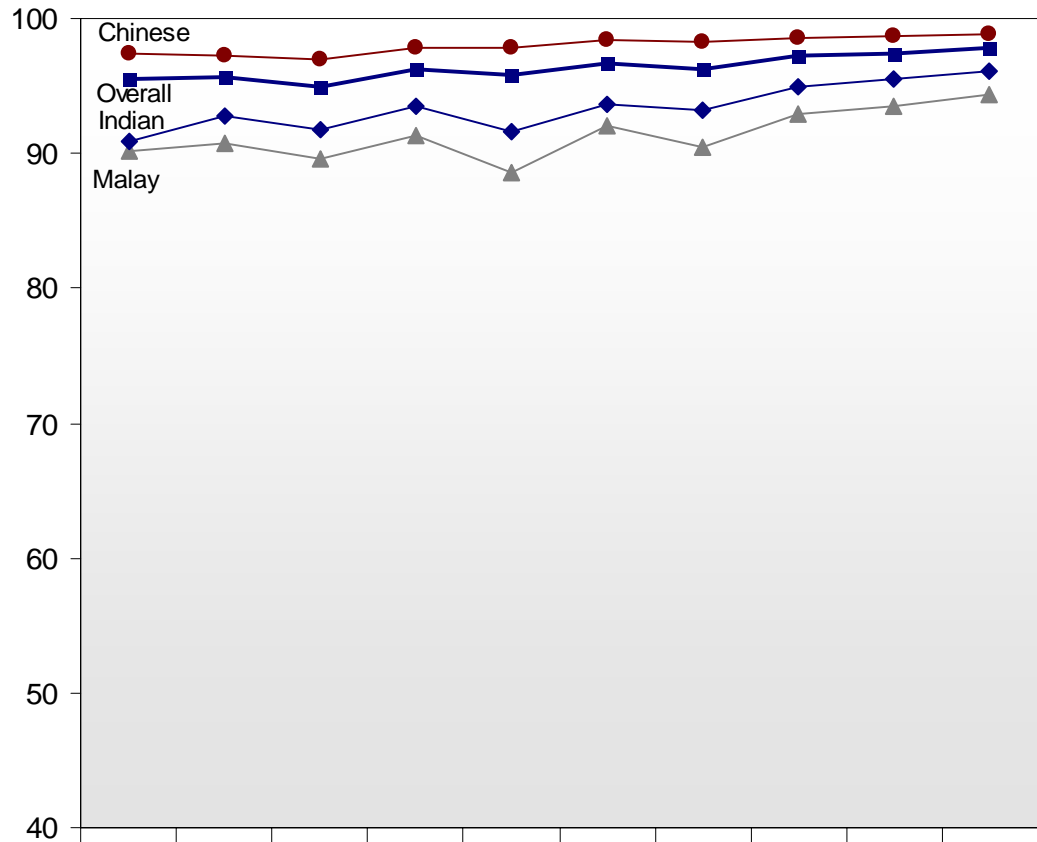


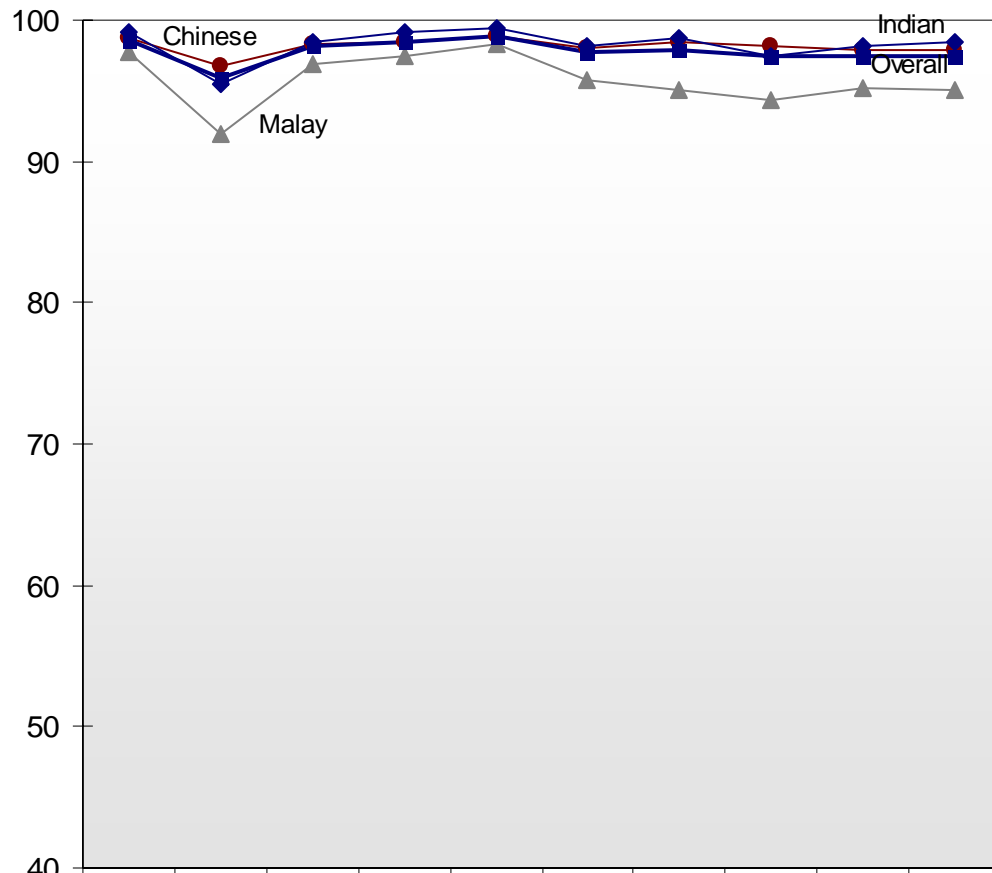
Chart A1: Percentage of PSLE Students Eligible for Secondary School



	1996	1997	1998	1999	2000	2001	2002	2003	2004	2005
▲ MALAY	90.1	90.7	89.6	91.3	88.6	92.0	90.5	92.9	93.5	94.4
● CHINESE	97.4	97.3	97.0	97.8	97.9	98.4	98.2	98.6	98.7	98.9
◆ INDIAN	90.9	92.8	91.8	93.5	91.6	93.7	93.2	95.0	95.5	96.1
OTHERS	94.5	95.8	97.0	97.2	96.0	96.8	96.7	97.4	97.2	97.7
■ OVERALL	95.5	95.7	95.0	96.2	95.8	96.7	96.3	97.2	97.4	97.8

Percentages are based on all students, including those in the EM3 stream.

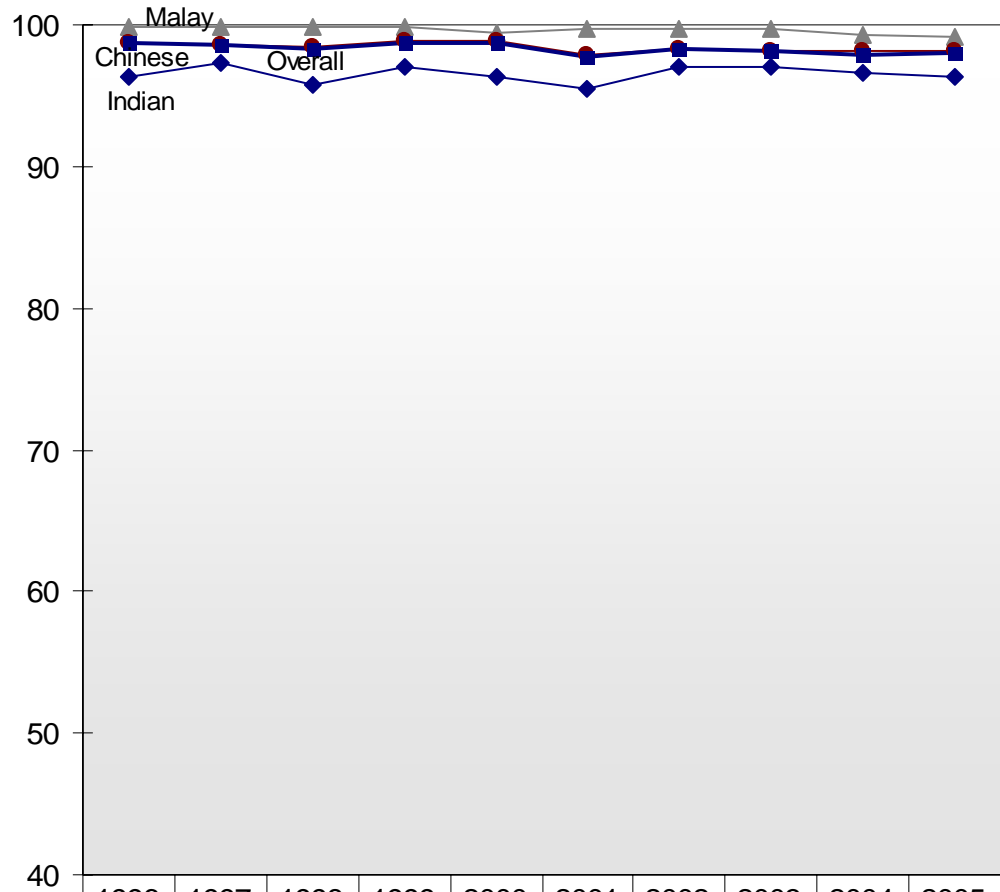
Chart A2: Percentage of PSLE Students Who Scored A* - C in English Language



	1996	1997	1998	1999	2000	2001	2002	2003	2004	2005
—▲— MALAY	97.8	92.0	96.9	97.5	98.3	95.7	95.1	94.3	95.2	95.1
—●— CHINESE	98.7	96.7	98.3	98.4	98.9	98.0	98.4	98.1	97.9	97.9
—◆— INDIAN	99.2	95.5	98.4	99.2	99.4	98.2	98.7	97.5	98.1	98.5
OTHERS	99.6	97.1	98.8	99.8	99.4	99.3	99.2	99.0	99.1	98.5
—■— OVERALL	98.6	95.9	98.1	98.4	98.9	97.7	97.9	97.5	97.5	97.5

Percentages exclude EM3 students.

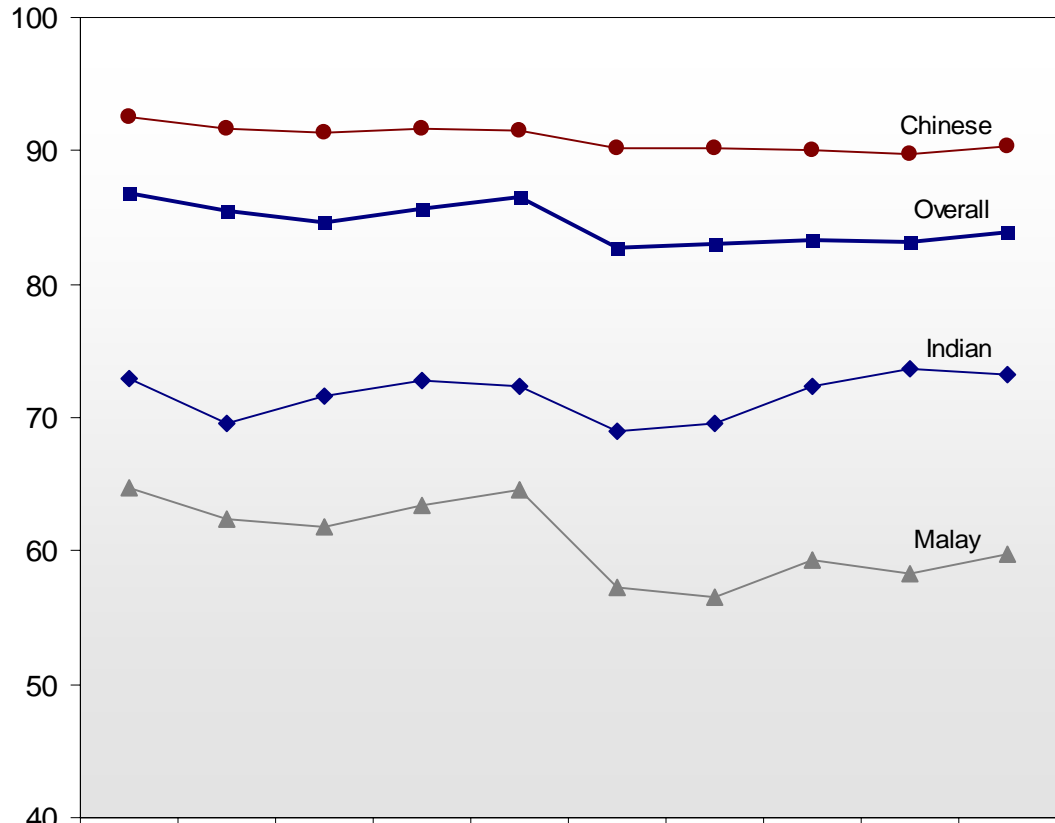
Chart A3: Percentage of PSLE Students Who Scored A* - C in Mother Tongue Language



	1996	1997	1998	1999	2000	2001	2002	2003	2004	2005
▲ MALAY	99.8	99.9	99.8	99.8	99.5	99.7	99.7	99.7	99.3	99.2
● CHINESE	98.8	98.6	98.5	98.9	98.9	97.9	98.3	98.1	98.1	98.1
◆ INDIAN	96.3	97.3	95.8	97.0	96.4	95.5	97.0	97.0	96.6	96.4
OTHERS	86.0	89.1	85.3	88.7	85.1	81.9	87.3	83.3	79.5	84.7
■ OVERALL	98.7	98.6	98.3	98.8	98.7	97.8	98.3	98.1	97.9	98.0

Percentages exclude EM3 students.

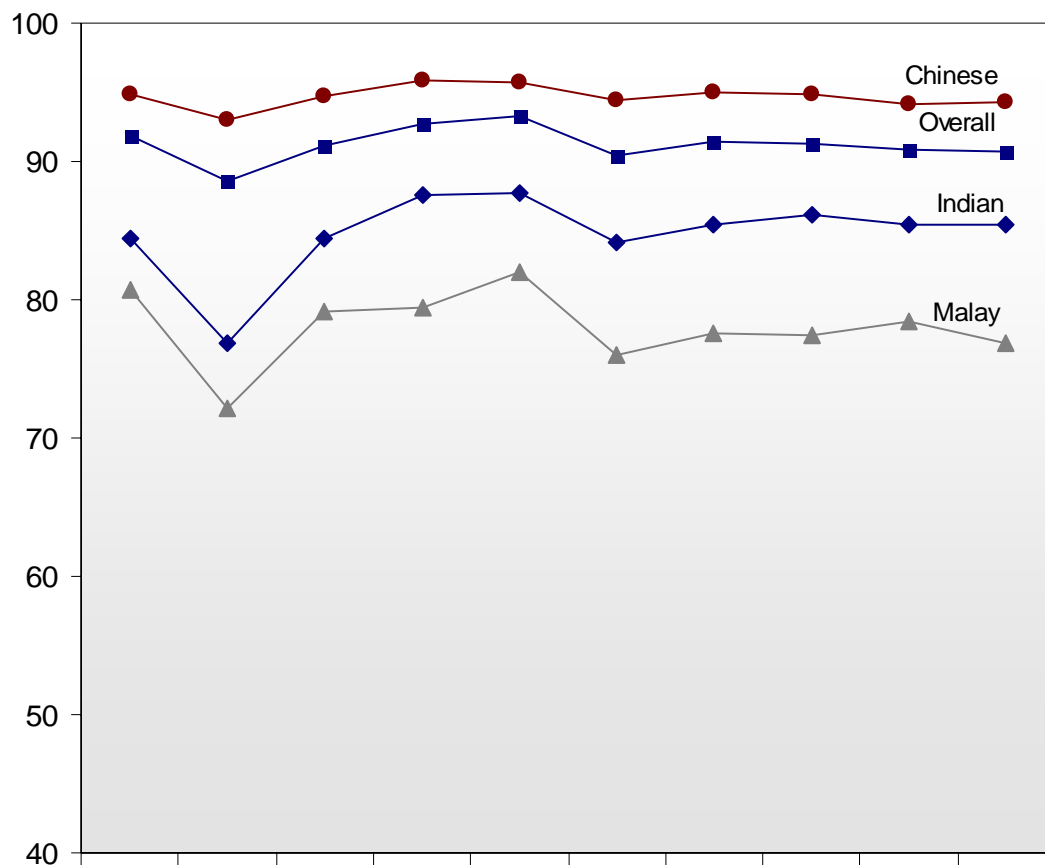
Chart A4: Percentage of PSLE Students Who Scored A* - C in Mathematics



	1996	1997	1998	1999	2000	2001	2002	2003	2004	2005
—▲— MALAY	64.8	62.4	61.8	63.4	64.6	57.2	56.5	59.3	58.3	59.7
—●— CHINESE	92.5	91.6	91.3	91.6	91.5	90.2	90.2	90.0	89.8	90.3
—◆— INDIAN	73.0	69.6	71.6	72.8	72.3	69.0	69.6	72.4	73.7	73.2
OTHERS	84.0	85.3	83.0	86.4	84.7	83.6	83.5	80.1	82.0	84.9
—■— OVERALL	86.8	85.5	84.6	85.7	86.5	82.8	83.0	83.3	83.2	83.9

Percentages exclude EM3 students.

Chart A5: Percentage of PSLE Students Who Scored A* - C in Science



	1996	1997	1998	1999	2000	2001	2002	2003	2004	2005
—▲— MALAY	80.7	72.2	79.2	79.4	82.0	76.0	77.6	77.5	78.4	76.8
—●— CHINESE	94.8	93.0	94.7	95.9	95.7	94.5	95.0	94.9	94.2	94.3
—◆— INDIAN	84.4	76.8	84.4	87.6	87.7	84.1	85.4	86.2	85.5	85.5
OTHERS	92.5	89.8	91.1	93.5	94.6	94.6	94.5	92.3	92.3	93.5
—■— OVERALL	91.9	88.6	91.2	92.7	93.3	90.5	91.4	91.3	90.9	90.7

Percentages exclude EM3 students.