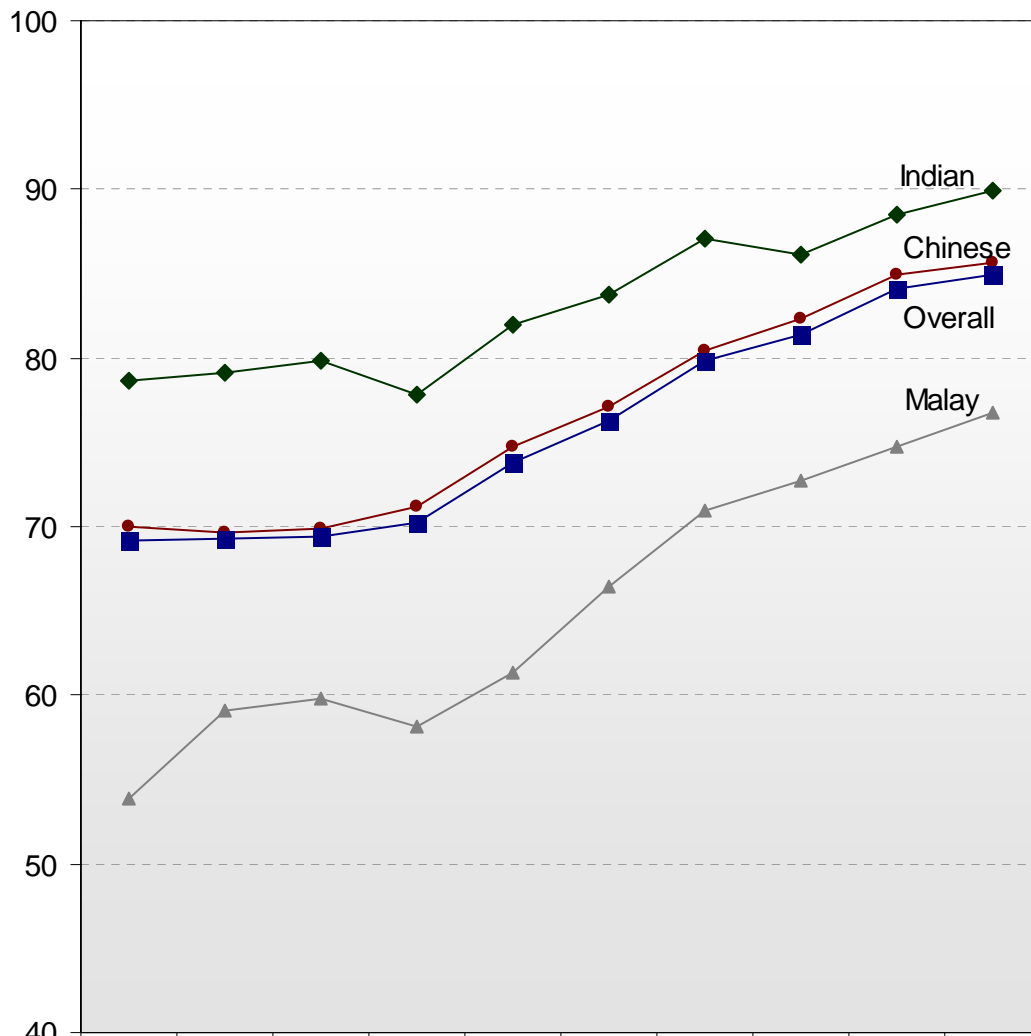
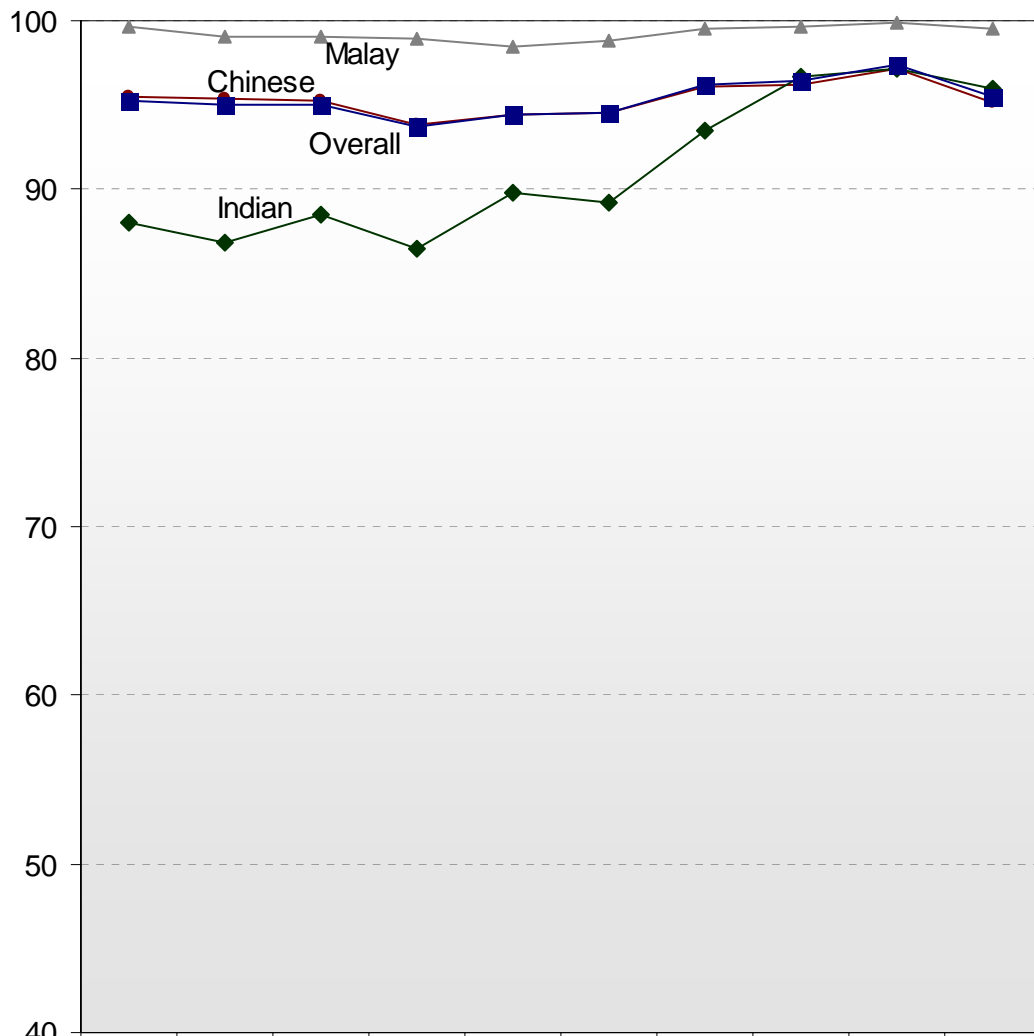


Chart B3: Percentage of GCE 'O' Level Pupils Who Passed English Language



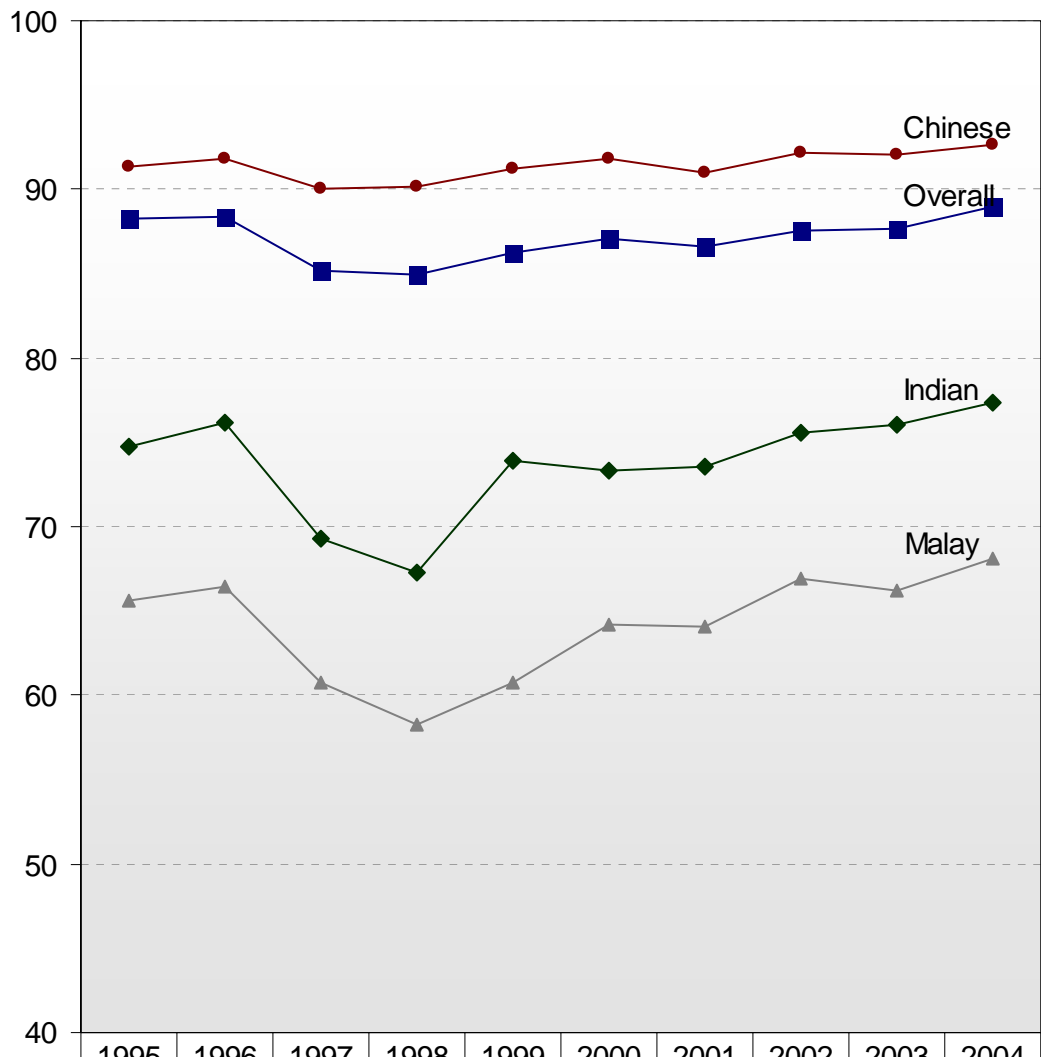
	1995	1996	1997	1998	1999	2000	2001	2002	2003	2004
—▲— Malay	53.9	59.1	59.8	58.2	61.4	66.4	70.9	72.7	74.8	76.7
—●— Chinese	70.0	69.6	69.9	71.2	74.8	77.1	80.4	82.3	85.0	85.6
—◆— Indian	78.6	79.1	79.9	77.8	82.0	83.7	87.1	86.1	88.5	89.9
—■— Others	80.4	81.1	79.2	82.1	82.5	87.5	87.6	86.8	89.9	89.9
—■— Overall	69.2	69.3	69.4	70.2	73.8	76.3	79.8	81.4	84.1	85.0

Chart B4: Percentage of GCE 'O' Level Pupils Who Passed Mother Tongue Language



	1995	1996	1997	1998	1999	2000	2001	2002	2003	2004
—▲ Malay	99.6	99.1	99.0	98.9	98.4	98.8	99.5	99.7	99.9	99.5
—● Chinese	95.5	95.4	95.2	93.8	94.4	94.6	96.1	96.2	97.1	95.1
—◆ Indian	88.0	86.8	88.5	86.5	89.8	89.2	93.5	96.7	97.1	96.0
Others	70.3	68.7	68.1	66.0	69.0	67.7	78.5	78.3	84.7	80.8
—■ Overall	95.3	95.0	95.0	93.7	94.4	94.6	96.2	96.5	97.4	95.5

Chart B5: Percentage of GCE 'O' Level Pupils Who Passed Mathematics



	1995	1996	1997	1998	1999	2000	2001	2002	2003	2004
—▲— Malay	65.6	66.4	60.7	58.3	60.8	64.2	64.1	66.9	66.2	68.1
—●— Chinese	91.4	91.8	90.0	90.1	91.2	91.8	91.0	92.2	92.1	92.7
—◆— Indian	74.8	76.2	69.3	67.3	73.9	73.3	73.5	75.6	76.1	77.3
Others	81.2	82.4	75.4	82.3	77.8	84.5	83.0	85.5	85.5	85.6
—■— Overall	88.3	88.4	85.2	84.9	86.3	87.1	86.6	87.5	87.7	89.0