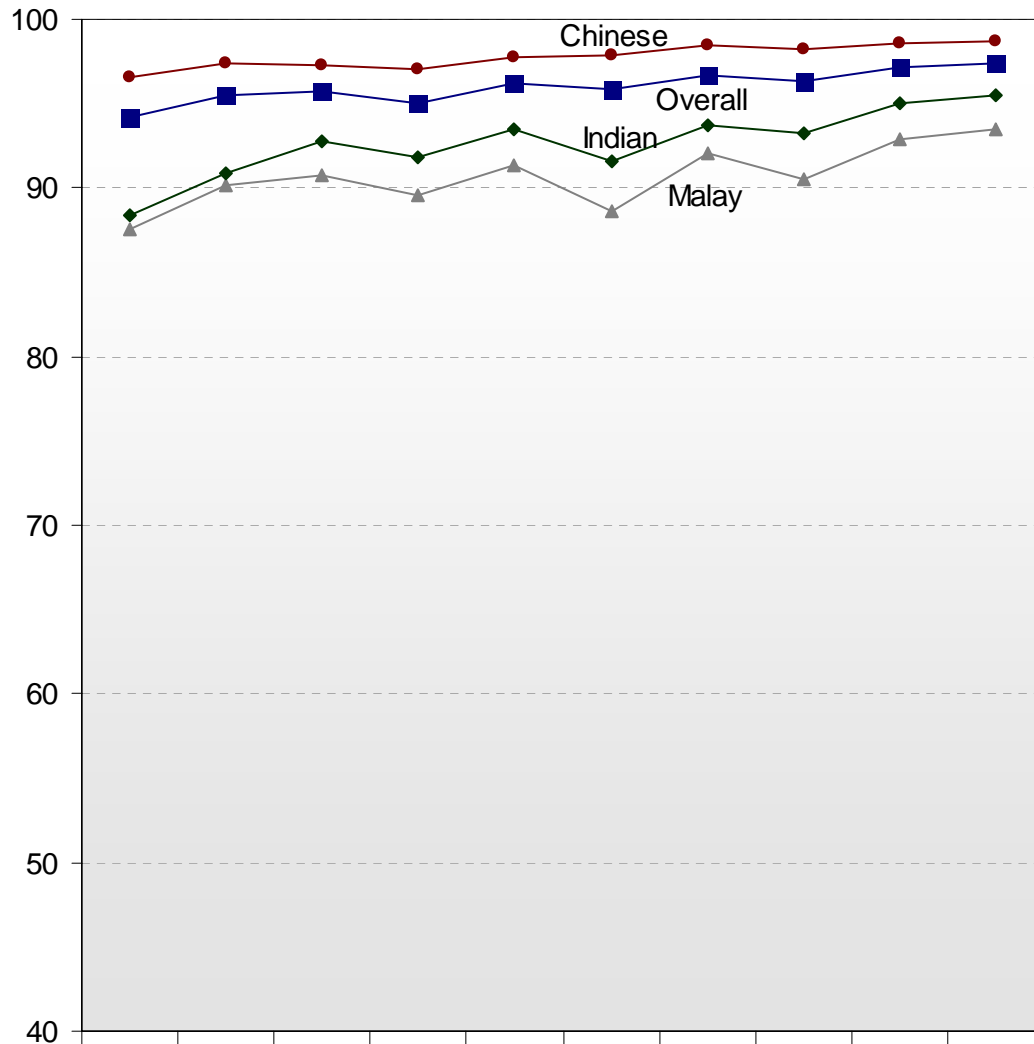


Chart A1: Percentage of PSLE Pupils Eligible for Secondary School



	1995	1996	1997	1998	1999	2000	2001	2002	2003	2004
—▲ Malay	87.6	90.1	90.7	89.6	91.3	88.6	92.0	90.5	92.9	93.5
—● Chinese	96.6	97.4	97.3	97.0	97.8	97.9	98.4	98.2	98.6	98.7
—◆ Indian	88.4	90.9	92.8	91.8	93.5	91.6	93.7	93.2	95.0	95.5
Others	94.8	94.5	95.8	97.0	97.2	96.0	96.8	96.7	97.4	97.2
—■ Overall	94.2	95.5	95.7	95.0	96.2	95.8	96.7	96.3	97.2	97.4

Note: Percentages are based on all pupils, including those in the EM3 stream.